

**Spring 2026 – Systems Biology of Reproduction**  
**Lecture Outline – Reproductive Endocrinology Systems**  
**Eric Nilsson – Biol 475/575**  
**10:35-11:50 am, Tuesday & Thursday**  
**April 7, 2026**  
**Week 13**

### **Reproductive Endocrinology Systems**

- Female Reproductive Endocrinology
  - Summary
  - Steroidogenesis and Action
  - Cycle
- Male Reproductive Endocrinology
  - Summary
  - Steroidogenesis and Action
  - Gonadotropins
- Endocrine Regulation
  - Neuroendocrinology
  - Endocrine Disruptors

### **REFERENCES**

- Kamenov Z, Gateva A, Dinicola S, Unfer V. Comparing the Efficacy of Myo-Inositol Plus  $\alpha$ -Lactalbumin vs. Myo-Inositol Alone on Reproductive and Metabolic Disturbances of Polycystic Ovary Syndrome. *Metabolites*. 2023 May 31;13(6):717.
- Fuxjager MJ, Ryder TB, Moody NM, Alfonso C, et al. Systems biology as a framework to understand the physiological and endocrine bases of behavior and its evolution- From concepts to a case study in birds. *Horm Behav*. 2023 May;151:105340.
- Kharb S, Joshi A. Multi-omics and machine learning for the prevention and management of female reproductive health. *Front Endocrinol (Lausanne)*. 2023 Feb 23;14:1081667.
- Bishop CV. Commentary on: Advancements in Microfluidic Systems for the Study of Female Reproductive Biology. *Endocrinology*. 2021 Oct 1;162(10):bqab115.
- Bosch E, Alviggi C, Lispi M, Conforti A, et al. Reduced FSH and LH action: implications for medically assisted reproduction. *Hum Reprod*. 2021 May 17;36(6):1469-1480.
- Dompe C, Kulus M, Stefańska K, et al. Human Granulosa Cells-Stemness Properties, Molecular Cross-Talk and Follicular Angiogenesis. *Cells*. 2021 Jun 5;10(6):1396.
- Mrozikiewicz AE, Ożarowski M, Jędrzejczak P. Biomolecular Markers of Recurrent Implantation Failure -A Review. *Int J Mol Sci*. 2021 Sep 18;22(18):10082.

- Soriano-Guillén L, Tena-Sempere M, Seraphim CE, Latronico AC, Argente J. Precocious sexual maturation: Unravelling the mechanisms of pubertal onset through clinical observations. *J Neuroendocrinol*. 2022 Feb;34(2):e12979.
- Terzic M, Aimagambetova G, Kunz J, et al. Molecular Basis of Endometriosis and Endometrial Cancer: Current Knowledge and Future Perspectives. *Int J Mol Sci*. 2021 Aug 27;22(17):9274.
- Chen Q, Zheng B, Du S, Lin Y. Explore the potential molecular mechanism of polycystic ovarian syndrome by protein-protein interaction network analysis. *Taiwan J Obstet Gynecol*. 2021 Sep;60(5):807-815.
- Macedo DB, Kaiser UB. DLK1, Notch Signaling and the Timing of Puberty. *Semin Reprod Med*. 2019 Jul;37(4):174-181.
- Jafarpour S, Khosravi S, Janghorbani M, et al. Association of serum and follicular fluid leptin and in vitro Fertilization/ ICSI outcome: A systematic review and meta-analysis. *J Gynecol Obstet Hum Reprod*. 2021 Jun;50(6):101924.
- Bodke VV, Burdette JE. Advancements in Microfluidic Systems for the Study of Female Reproductive Biology. *Endocrinology*. 2021 Oct 1;162(10):bqab078.
- Tonsfeldt KJ, Mellon PL, Hoffmann HM. Circadian Rhythms in the Neuronal Network Timing the Luteinizing Hormone Surge. *Endocrinology*. 2022 Feb 1;163(2):bqab268.
- Biller BMK, Höybye C, Carroll P, et al. Pregnancy outcomes in women receiving growth hormone replacement therapy enrolled in the NordiNet® International Outcome Study (IOS) and the American Norditropin® Studies: Web-Enabled Research (ANSWER) Program. *Pituitary*. 2021 Aug;24(4):611-621.
- Louden ED, Poch A, Kim H-G, et al. Genetics of hypogonadotropic Hypogonadism-Human and mouse genes, inheritance, oligogenicity, and genetic counseling. *Mol Cell Endocrinol*. 2021 Aug 20;534:111334.
- Williams CL, Garcia-Reyero N, Martyniuk CJ, Tubbs CW, Bisesi JH Jr. Regulation of endocrine systems by the microbiome: Perspectives from comparative animal models. *Gen Comp Endocrinol*. 2020 Feb 12;292:113437. doi: 10.1016/j.ygcen.2020.113437.
- Crespo D, Bogerd J, Sambroni E, LeGac F, et al. The initiation of puberty in Atlantic salmon brings about large changes in testicular gene expression that are modulated by the energy status. *BMC Genomics*. 2019 Jun 11;20(1):475.
- Limesand SW, Thornburg KL, Harding JE. 30th anniversary for the Developmental Origins of Endocrinology. *J Endocrinol*. 2019 May 1. pii: JOE-19-0227.R1. doi: 10.1530/JOE-19-0227. [Epub ahead of print]
- Patil K, Yelamanchi S, Kumar M, Hinduja I, et al. Quantitative mass spectrometric analysis to unravel glycoproteomic signature of follicular fluid in women with polycystic ovary syndrome. *PLoS One*. 2019 Apr 4;14(4):e0214742.
- Wang XY, Qin YY. Long non-coding RNAs in biology and female reproductive disorders. *Front Biosci (Landmark Ed)*. 2019 Mar 1;24:750-764.
- Sun BZ, Kangarloo T, Adams JM, et al. Healthy Post-Menarchal Adolescent Girls Demonstrate Multi-Level Reproductive Axis Immaturity. *J Clin Endocrinol Metab*. 2019 Feb 1;104(2):613-623.
- Abruzzese GA, Crisosto N, De Grava Kempinas W, Sotomayor-Zárate R. Developmental programming of the female neuroendocrine system by steroids. *J Neuroendocrinol*. 2018 Oct;30(10):e12632.

- Morsi A, DeFranco D, Witchel SF. The Hypothalamic-Pituitary-Adrenal Axis and the Fetus. *Horm Res Paediatr*. 2018;89(5):380-387.
- Guo X, Puttabyatappa M, Thompson RC, Padmanabhan V. Developmental Programming: Contribution of Epigenetic Enzymes to Antral Follicular Defects in the Sheep Model of PCOS. *Endocrinology*. 2019 Oct 1;160(10):2471-2484.
- Knapczyk-Stwora K, Nynca A, Ciereszko RE, Paukszto L, et al. Flutamide-induced alterations in transcriptional profiling of neonatal porcine ovaries. *J Anim Sci Biotechnol*. 2019 Apr 3;10:35.
- Brażert M, Iżycki D, Kranc W, Borowiec B, et al. Genes involved in hormone metabolism and cellular response in human ovarian granulosa cells. *J Biol Regul Homeost Agents*. 2019 Mar-Apr;33(2):461-468.
- Astapova O, Minor BMN, Hammes SR. Physiological and Pathological Androgen Actions in the Ovary. *Endocrinology*. 2019 May 1;160(5):1166-1174.
- Stamatiades GA, Carroll RS, Kaiser UB. GnRH-A Key Regulator of FSH. *Endocrinology*. 2019 Jan 1;160(1):57-67.
- Riccetti L, Sperduti S, Lazzaretti C, et al. The cAMP/PKA pathway: steroidogenesis of the antral follicular stage. *Minerva Ginecol*. 2018 Oct;70(5):516-524.
- Kaufman JM, Lapauw B, Mahmoud A, T'Sjoen G, Huhtaniemi IT. Aging and the Male Reproductive System. *Endocr Rev*. 2019 Aug 1;40(4):906-972.
- Toufaily C, Schang G, Zhou X, Wartenberg P, et al. Impaired LH surge amplitude in gonadotrope-specific progesterone receptor knockout mice. *J Endocrinol*. 2020 Jan;244(1):111-122.
- Malone SA, Papadakis GE, Messina A, Mimouni NEH, et al. Defective AMH signaling disrupts GnRH neuron development and function and contributes to hypogonadotropic hypogonadism. *Elife*. 2019 Jul 10;8. pii: e47198. doi: 10.7554/eLife.47198.
- Kaufman JM, Lapauw B, Mahmoud A, T'Sjoen G, Huhtaniemi IT. Aging and the Male Reproductive System. *Endocr Rev*. 2019 Aug 1;40(4):906-972.
- Khawar MB, et al. MicroRNAs: Recent insights towards their role in male infertility and reproductive cancers. *Bosn J Basic Med Sci*. 2019 Feb 12;19(1):31-42.
- Diamanti-Kandarakis E, Dattilo M, Macut D, et al. MECHANISMS IN ENDOCRINOLOGY: Aging and anti-aging: a Combo-Endocrinology overview. *Eur J Endocrinol*. 2017 Jun;176(6):R283-R308.
- Day F, Karaderi T, Jones MR, Meun C, He C, et al. Large-scale genome-wide meta-analysis of polycystic ovary syndrome suggests shared genetic architecture for different diagnosis criteria. *PLoS Genet*. 2018 Dec 19;14(12):e1007813.
- Astapova O, Minor BMN, Hammes SR. Physiological and Pathological Androgen Actions in the Ovary. *Endocrinology*. 2019 May 1;160(5):1166-1174.
- Kim K, Choe HK. Role of hypothalamus in aging and its underlying cellular mechanisms. *Mech Ageing Dev*. 2019 Jan;177:74-79.
- Heck AL, Crestani CC, Fernández-Guasti A, et al. Neuropeptide and steroid hormone mediators of neuroendocrine regulation. *J Neuroendocrinol*. 2018 Oct;30(10):e12599.
- Onuzulu CD, Rotimi OA, Rotimi SO. Epigenetic modifications associated with in utero exposure to endocrine disrupting chemicals BPA, DDT and Pb. *Rev Environ Health*. 2019 Dec 18;34(4):309-325.

- Williams GP, Darbre PD. Low-dose environmental endocrine disruptors, increase aromatase activity, estradiol biosynthesis and cell proliferation in human breast cells. *Mol Cell Endocrinol.* 2019 Apr 15;486:55-64.
- Sidorkiewicz I, Zaręba K, Wołczyński S, Czerniecki J. (2017) Endocrine-disrupting chemicals-Mechanisms of action on male reproductive system. *Toxicol Ind Health.* 33(7):601-609.
- Barban N, Jansen R, de Vlaming R, et al (2016) Genome-wide analysis identifies 12 loci influencing human reproductive behavior. *Nat Genet.* 48(12):1462-1472.
- Das NI, Kumar TR. (2018) Molecular regulation of follicle-stimulating hormone synthesis, secretion and action. *J Mol Endocrinol.* 60(3):R131-R155.
- Hu KL, Zhao H, Chang HM, Yu Y, Qiao J. (2018) Kisspeptin/Kisspeptin Receptor System in the Ovary. *Front Endocrinol (Lausanne).* 4;8:365.
- Zeydabadi Nejad S, Ramezani Tehrani F, Zadeh-Vakili A. (2017) The Role of Kisspeptin in Female Reproduction. *Int J Endocrinol Metab.* 15(3):e44337.
- Pfaff DW, Gagnidze K, Hunter RG. (2017) Molecular endocrinology of female reproductive behavior. *Mol Cell Endocrinol.* 2017 Oct 31. pii: S0303-7207(17)30565-8. [Epub ahead of print]
- Sen A, Sellix MT. (2016) The Circadian Timing System and Environmental Circadian Disruption: From Follicles to Fertility. *Endocrinology.* 157(9):3366-73.
- Ünlütürk U, Sezgin E, Yildiz BO. (2016) Evolutionary determinants of polycystic ovary syndrome: part 1. *Fertil Steril.* 106(1):33-41.
- Houffly S, Matthys C, Soubry A. (2017) Male Obesity: Epigenetic Origin and Effects in Sperm and Offspring. *Curr Mol Biol Rep.* 3(4):288-296.
- Moretti C, Lanzolla G, Moretti M, Gnessi L, Carmina E. (2017) Androgens and Hypertension in Men and Women: a Unifying View. *Curr Hypertens Rep.* 19(5):44.
- Schally AV, Block NL, Rick FG. (2017) Discovery of LHRH and development of LHRH analogs for prostate cancer treatment. *Prostate.* 77(9):1036-1054.
- Diamanti-Kandarakis E, Dattilo M, Macut D, Duntas L, Gonos ES, Goulis DG, Gantenbein CK, Kapetanou M, Koukkou E, Lambrinoudaki I, Michalaki M, Eftekhari-Nader S, Pasquali R, Peppas M, Tzanela M, Vassilatou E, Vryonidou A; COMBO ENDO TEAM: 2016. MECHANISMS IN ENDOCRINOLOGY: Aging and anti-aging: a Combo-Endocrinology overview. *Eur J Endocrinol.* 2017 Jun;176(6):R283-R308.
- Marcocchia D, Pellegrini M, Fiocchetti M, Lorenzetti S, Marino M. (2017) Food components and contaminants as (anti)androgenic molecules. *Genes Nutr.* 16;12:6.
- Podlasek CA, Mulhall J, Davies K, Wingard CJ, Hannan JL, Bivalacqua TJ, Musicki B, Khera M, González-Cadavid NF, Burnett AL 2nd. (2016) Translational Perspective on the Role of Testosterone in Sexual Function and Dysfunction. *J Sex Med.* 13(8):1183-98.
- O'Donnell L, Stanton P, de Kretser DM. (2017) Endocrinology of the Male Reproductive System and Spermatogenesis. In: De Groot LJ, Chrousos G, Dungan K, et al, editors. *Endotext* [Internet]. South Dartmouth (MA): MDText.com, Inc.; 2000-.2017 Jan 11.
- Millar RP, Sonigo C, Anderson RA5, George J, Maione L, Brailly-Tabard S, Chanson P, Binart N, Young J. (2017) Hypothalamic-Pituitary-Ovarian Axis Reactivation by Kisspeptin-10 in Hyperprolactinemic Women With Chronic Amenorrhea. *J Endocr Soc.* 16;1(11):1362-1371.

- Drobná Z, Henriksen AD, Wolstenholme JT, Montiel C, Lambeth PS, Shang S, Harris EP, Zhou C, Flaws JA, Adli M, Rissman EF. (2018) Transgenerational Effects of Bisphenol A on Gene Expression and DNA Methylation of Imprinted Genes in Brain. *Endocrinology*. 159(1):132-144.
- Yuan B, Wu W, Chen M, et al. (2017) From the Cover: Metabolomics Reveals a Role of Betaine in Prenatal DBP Exposure-Induced Epigenetic Transgenerational Failure of Spermatogenesis in Rats. *Toxicol Sci*. 158(2):356-366.
- Carré J, Gatimel N, Moreau J, Parinaud J, Léandri R. (2017) Does air pollution play a role in infertility?: a systematic review. *Environ Health*. 16(1):82.
- Wang Y, Chen F, Ye L, Zirkin B, Chen H. (2017) Steroidogenesis in Leydig cells: effects of aging and environmental factors. *Reproduction*. 154(4):R111-R122.
- Mogensen DM, Pihl MB, Skakkebaek NE, Andersen HR, Juul A, Kyhl HB, Swan S, Kristensen DM, Andersen MS, Lind DV, Jensen TK (2017) Prenatal exposure to antifungal medication may change anogenital distance in male offspring: a preliminary study. *Environ Health*. 21;16(1):68.
- Sifakis S, Androutsopoulos VP, Tsatsakis AM, Spandidos DA. (2017) Human exposure to endocrine disrupting chemicals: effects on the male and female reproductive systems. *Environ Toxicol Pharmacol*. 51:56-70.
- Wirbisky SE, Freeman JL. (2017) Atrazine exposure elicits copy number alterations in the zebrafish genome. *Comp Biochem Physiol C Toxicol Pharmacol*. 194:1-8.
- Tran V, Tindula G, Huen K, et al (2017) Prenatal phthalate exposure and 8-isoprostane among Mexican-American children with high prevalence of obesity. *J Dev Orig Health Dis*. 8(2):196-205.
- Goldsby JA, Wolstenholme JT, Rissman EF. (2017) Multi- and Transgenerational Consequences of Bisphenol A on Sexually Dimorphic Cell Populations in Mouse Brain. *Endocrinology*. 158(1):21-30.
- Brieño-Enríquez MA, Larriba E, Del Mazo J. (2016) Endocrine disruptors, microRNAs, and primordial germ cells: a dangerous cocktail. *Fertil Steril*. 15;106(4):871-9.
- Sartain CV, Hunt PA. (2016) An old culprit but a new story: bisphenol A and "NextGen" bisphenols. *Fertil Steril*. 106(4):820-6.
- Traore K, Martinez-Arguelles DB, Papadopoulos V, Chen H, Zirkin BR. (2016) Repeated exposures of the male Sprague Dawley rat reproductive tract to environmental toxicants: Do earlier exposures to di-(2-ethylhexyl)phthalate (DEHP) alter the effects of later exposures? *Reprod Toxicol*. 61:136-41.
- Fischer C, Mamillapalli R, Goetz LG, Jorgenson E, Ilagan Y, Taylor HS. (2016) Bisphenol A (BPA) Exposure In Utero Leads to Immunoregulatory Cytokine Dysregulation in the Mouse Mammary Gland: A Potential Mechanism Programming Breast Cancer Risk. *Horm Cancer*. 7(4):241-51.
- Featherstone K, Hey K, Momiji H, et al. (2016) Spatially coordinated dynamic gene transcription in living pituitary tissue. *Elife*. 2016 Feb 1;5. pii: e08494.
- Hasegawa Y, Taylor D, Ovchinnikov DA, et al. (2015) Variability of Gene Expression Identifies Transcriptional Regulators of Early Human Embryonic Development. *PLoS Genet*. 11(8):e1005428.
- Bar-Lev TH, Harris D, Tomić M, et al. (2015) Role of PI4K and PI3K-AKT in ERK1/2 activation by GnRH in the pituitary gonadotropes. *Mol Cell Endocrinol*. 5;415:12-23.

- Yin W, Maguire SM, Pham B, et al. (2015) Testing the Critical Window Hypothesis of Timing and Duration of Estradiol Treatment on Hypothalamic Gene Networks in Reproductively Mature and Aging Female Rats. *Endocrinology*. 156(8):2918-33.
- Navarro VM, Bosch MA, León S, et al. (2015) The integrated hypothalamic tachykinin-kisspeptin system as a central coordinator for reproduction. *Endocrinology*. 156(2):627-37.
- Kermath BA, Riha PD, Woller MJ, Wolfe A, Gore AC. (2014) Hypothalamic molecular changes underlying natural reproductive senescence in the female rat. *Endocrinology*. 155(9):3597-609.
- Garcia-Reyero N, Tingaud-Sequeira A, Cao M, Zhu Z, Perkins EJ, Hu W. (2014) *Endocrinology: advances through omics and related technologies*. *Gen Comp Endocrinol*. 1;203:262-73.
- Maggi R, Cariboni AM, Montagnani Marelli M, et al. (2015) GnRH and GnRH receptors in the pathophysiology of the human female reproductive system. *Hum Reprod Update*. 2015 Dec 29. pii: dmv059. [Epub ahead of print]
- Sellix MT. (2015) Circadian clock function in the mammalian ovary. *J Biol Rhythms*. 30(1):7-19.
- Mereness AL, Murphy ZC, Forrestel AC, Butler S, Ko C, Richards JS, Sellix MT. (2016) Conditional Deletion of *Bmal1* in Ovarian Theca Cells Disrupts Ovulation in Female Mice. *Endocrinology*. 157(2):913-27.
- Izumi Y, Suzuki E, Kanzaki S, Yatsuga S, et al. (2014) Genome-wide copy number analysis and systematic mutation screening in 58 patients with hypogonadotropic hypogonadism. *Fertil Steril*. 102(4):1130-1136.e3.
- Guo F, Yan L, Guo H, Li L, et al. (2015) The Transcriptome and DNA Methylation Landscapes of Human Primordial Germ Cells. *Cell*. 161(6):1437-52.
- Wisniewski P, Romano RM, Kizys MM, et al. (2015) Adult exposure to bisphenol A (BPA) in Wistar rats reduces sperm quality with disruption of the hypothalamic-pituitary-testicular axis. *Toxicology*. 329:1-9.
- Klenke U, Constantin S, Wray S. (2016) BPA directly decreases GnRH neuronal activity via non-canonical pathway. *Endocrinology*. 2016 Mar 2;en20151924. [Epub ahead of print]
- Palioura E, Diamanti-Kandarakis E. (2015) Polycystic ovary syndrome (PCOS) and endocrine disrupting chemicals (EDCs). *Rev Endocr Metab Disord*. 16(4):365-71.
- Stel J, Legler J. (2015) The Role of Epigenetics in the Latent Effects of Early Life Exposure to Obesogenic Endocrine Disrupting Chemicals. *Endocrinology*. 156(10):3466-72.
- Barrett ES, Parlett LE, Wang C, Drobnis EZ, Redmon JB, Swan SH. (2014) Environmental exposure to di-2-ethylhexyl phthalate is associated with low interest in sexual activity in premenopausal women. *Horm Behav*. 66(5):787-92.
- Majumdar SS, Bhattacharya I. (2013) Genomic and post-genomic leads toward regulation of spermatogenesis. *Prog Biophys Mol Biol*. 113(3):409-22.
- Williams TD. (2012) Hormones, life-history, and phenotypic variation: opportunities in evolutionary avian endocrinology. *Gen Comp Endocrinol*. 1;176(3):286-95.
- Tonsfeldt KJ, Chappell PE. (2012) Clocks on top: the role of the circadian clock in the hypothalamic and pituitary regulation of endocrine physiology. *Mol Cell Endocrinol*. 5;349(1):3-12.

- Saltzman W, Maestriperi D. (2011) The neuroendocrinology of primate maternal behavior. *Prog Neuropsychopharmacol Biol Psychiatry*. 1;35(5):1192-204.
- Im A, Appleman LJ. (2010) Mifepristone: pharmacology and clinical impact in reproductive medicine, endocrinology and oncology. *Expert Opin Pharmacother*. 11(3):481-8.
- Makieva S, Saunders PT, Norman JE. Androgens in pregnancy: roles in parturition. *Hum Reprod Update*. 2014 Mar 18. [Epub ahead of print].
- Bailey M, Silver R. (2014) Sex differences in circadian timing systems: implications for disease. *Front Neuroendocrinol*. 35(1):111-39.
- Schwartz C, Andrews MT. (2013) Circannual transitions in gene expression: lessons from seasonal adaptations. *Curr Top Dev Biol*. 105:247-73.
- Lovejoy DA, Barsyte-Lovejoy D. (2013) Systems approaches to genomic and epigenetic inter-regulation of peptide hormones in stress and reproduction. *Prog Biophys Mol Biol*. 113(3):375-86.
- Stevenson TJ, et al. (2012) Gonadotropin-releasing hormone plasticity: a comparative perspective. *Front Neuroendocrinol*. 33(3):287-300.
- Stötzel C, et al. (2012) Advances in modeling of the bovine estrous cycle: synchronization with PGF2 $\alpha$ . *Theriogenology*. 15;78(7):1415-28.
- Emera D, Wagner GP. (2012) Transformation of a transposon into a derived prolactin promoter with function during human pregnancy. *Proc Natl Acad Sci U S A*. 10;109(28):11246-51.
- Yegorov S, Good S. (2012) Using paleogenomics to study the evolution of gene families: origin and duplication history of the relaxin family hormones and their receptors. *PLoS One*. 7(3):e32923.
- Mani SK, et al. (2012) Convergence of multiple mechanisms of steroid hormone action. *Horm Metab Res*. 44(8):569-76.
- Czupryn A, et al. (2011) Transplanted hypothalamic neurons restore leptin signaling and ameliorate obesity in db/db mice. *Science*. 25;334(6059):1133-7.
- Bellem A, et al. (2011) Measuring estrogens and progestagens in humans: an overview of methods. *Gend Med*. 8(5):283-99.
- Prossnitz ER, Barton M. (2011) The G-protein-coupled estrogen receptor GPER in health and disease. *Nat Rev Endocrinol*. 16;7(12):715-26.
- Waye A, Trudeau VL. (2011) Neuroendocrine disruption: more than hormones are upset. *J Toxicol Environ Health B Crit Rev*. 14(5-7):270-91.
- Balasubramanian R, Crowley WF Jr. (2011) Isolated GnRH deficiency: a disease model serving as a unique prism into the systems biology of the GnRH neuronal network. *Mol Cell Endocrinol*. 22;346(1-2):4-12.
- Kim JJ, Sefton EC. (2012) The role of progesterone signaling in the pathogenesis of uterine leiomyoma. *Mol Cell Endocrinol*. 25;358(2):223-31.
- Jung EM, Choi KC, Yu FH, Jeung EB. (2010) Effects of 17beta-estradiol and xenoestrogens on mouse embryonic stem cells. *Toxicol In Vitro*. 24(6):1538-45.
- Pineda R, et al. (2010) Physiological roles of the kisspeptin/GPR54 system in the neuroendocrine control of reproduction. *Prog Brain Res*. 181:55-77.
- Binart N, Bachelot A, Bouilly J. (2010) Impact of prolactin receptor isoforms on reproduction. *Trends Endocrinol Metab*. 21(6):362-8.

- McGuire NL, Bentley GE. (2010) Neuropeptides in the gonads: from evolution to pharmacology. *Front Pharmacol.* 9;1:114.
- Tubbs C, et al. (2014) Advances in conservation endocrinology: The application of molecular approaches to the conservation of endangered species. *Gen Comp Endocrinol.* 2014 Mar 5. pii: S0016-6480(14)00056-2. [Epub ahead of print].
- Kamenický P, et al. (2014) Growth hormone, insulin-like growth factor-1, and the kidney: pathophysiological and clinical implications. *Endocr Rev.* 35(2):234-81.
- Perrett RM, McArdle CA. (2013) Molecular Mechanisms of Gonadotropin-Releasing Hormone Signaling: Integrating Cyclic Nucleotides into the Network. *Front Endocrinol (Lausanne).* 20;4:180.
- Sellix MT. (2013) Clocks underneath: the role of peripheral clocks in the timing of female reproductive physiology. *Front Endocrinol (Lausanne).* 23;4:91.
- Mauvais-Jarvis F, Clegg DJ, Hevener AL. (2013) The role of estrogens in control of energy balance and glucose homeostasis. *Endocr Rev.* 34(3):309-38.
- Pfaff DW, Rapin I, Goldman S. (2011) Male predominance in autism: neuroendocrine influences on arousal and social anxiety. *Autism Res.* 4(3):163-76.
- Robins JC, Marsit CJ, Padbury JF, et al. (2011) Endocrine disruptors, environmental oxygen, epigenetics and pregnancy. *Front Biosci (Elite Ed).* 1;3:690-700.
- Kino T, Chrousos GP. (2011) Circadian CLOCK-mediated regulation of target-tissue sensitivity to glucocorticoids: implications for cardiometabolic diseases. *Endocr Dev.* 20:116-26.
- Haml R, Šnajderová M, Mardešić T. (2011) Antimüllerian hormone (AMH) not only a marker for prediction of ovarian reserve. *Physiol Res.* 60(2):217-23.
- Szarek E, Cheah PS, Schwartz J, Thomas P. (2010) Molecular genetics of the developing neuroendocrine hypothalamus. *Mol Cell Endocrinol.* 8;323(1):115-23.
- Chakraborty A, Chatterjee S, Roy P. (2010) Progesterone receptor agonists and antagonists as anticancer agents. *Mini Rev Med Chem.* 10(6):506-17.
- Nader N, Chrousos GP, Kino T. (2010) Interactions of the circadian CLOCK system and the HPA axis. *Trends Endocrinol Metab.* 21(5):277-86.
- Krsmanovic LZ, et al. (2009) The hypothalamic GnRH pulse generator: multiple regulatory mechanisms. *Trends Endocrinol Metab.* 20(8):402-8.
- Pierantoni R, et al. (2009) Testicular gonadotropin-releasing hormone activity, progression of spermatogenesis, and sperm transport in vertebrates. *Ann N Y Acad Sci.* 1163:279-91.
- Gahete MD, et al. (2009) Understanding the multifactorial control of growth hormone release by somatotropes: lessons from comparative endocrinology. *Ann N Y Acad Sci.* 1163:137-53.
- Santen RJ, et al. (2009) History of aromatase: saga of an important biological mediator and therapeutic target. *Endocr Rev.* 30(4):343-75.
- Sahmay S, et al. (2013) Elevated serum levels of anti-Müllerian hormone can be introduced as a new diagnostic marker for polycystic ovary syndrome. *Acta Obstet Gynecol Scand.* 92(12):1369-74.
- Hendriks ML, (2013) Influence of ovarian manipulation on reproductive endocrinology in polycystic ovarian syndrome and regularly cycling women. *Eur J Endocrinol.* 14;169(4):503-10.

- Witchel SF, Tena-Sempere M. (2013) The Kiss1 system and polycystic ovary syndrome: lessons from physiology and putative pathophysiologic implications. *Fertil Steril.* 100(1):12-22.
- Mittelman-Smith MA, et al. (2012) Arcuate kisspeptin/neurokinin B/dynorphin (KNDy) neurons mediate the estrogen suppression of gonadotropin secretion and body weight. *Endocrinology.* 153(6):2800-12.
- Toda K, et al. (2012) Impact of ovarian sex steroids on ovulation and ovulatory gene induction in aromatase-null mice. *Endocrinology.* 153(1):386-94.
- McGuire NL, Kangas K, Bentley GE. (2011) Effects of melatonin on peripheral reproductive function: regulation of testicular GnIH and testosterone. *Endocrinology.* 152(9):3461-70.
- Luo W, Gumen A, Haughian JM, Wiltbank MC. (2011) The role of luteinizing hormone in regulating gene expression during selection of a dominant follicle in cattle. *Biol Reprod.* 84(2):369-78.
- Allan CM, et al. (2010) Estradiol induction of spermatogenesis is mediated via an estrogen receptor- $\alpha$  mechanism involving neuroendocrine activation of follicle-stimulating hormone secretion. *Endocrinology.* 151(6):2800-10.
- Salvi R, Pralong FP. (2010) Molecular characterization and phenotypic expression of mutations in genes for gonadotropins and their receptors in humans. *Front Horm Res.* 39:1-12.
- Ott J, et al. (2009) Luteinizing hormone and androstendione are independent predictors of ovulation after laparoscopic ovarian drilling: a retrospective cohort study. *Reprod Biol Endocrinol.* 30:7:153.
- Banaszewska B, et al. (2009) Comparison of simvastatin and metformin in treatment of polycystic ovary syndrome: prospective randomized trial. *J Clin Endocrinol Metab.* 94(12):4938-45.
- Fowler PA, et al. (2009) Maternal smoking and developmental changes in luteinizing hormone (LH) and the LH receptor in the fetal testis. *J Clin Endocrinol Metab.* 94(12):4688-95.
- Amory JK, et al. (2009) Oral administration of the GnRH antagonist acyline, in a GIPET-enhanced tablet form, acutely suppresses serum testosterone in normal men: single-dose pharmacokinetics and pharmacodynamics. *Cancer Chemother Pharmacol.* 64(3):641-5.
- Lee S, Kang DW, et al. (2009) Theca-specific estrogen receptor- $\alpha$  knockout mice lose fertility prematurely. *Endocrinology.* 150(8):3855-62.
- Pinilla L, et al. (2009) Delayed puberty in spontaneously hypertensive rats involves a primary ovarian failure independent of the hypothalamic KiSS-1/GPR54/GnRH system. *Endocrinology.* 150(6):2889-97.
- Navarro VM, (2009) Persistent impairment of hypothalamic KiSS-1 system after exposures to estrogenic compounds at critical periods of brain sex differentiation. *Endocrinology.* 150(5):2359-67.

**"Systems Biology of Reproduction"**

Spring 2024 (Even Years) – Course Syllabus  
 Biol 475/575 Undergraduate/Graduate (3 Credit)  
 SLN: (475) – 06763, (575) – 06764  
 Time - Tuesday and Thursday 10:35 am-11:50 am  
 Course Lectures in person and recorded on Canvas/Panopto and Discussion Sessions live in person and on WSU Zoom for all campuses (Hybrid Course)  
 Room – CUE 418  
 Course Director – Michael Skinner, Abelson Hall 507, 335-1524, [skinner@wsu.edu](mailto:skinner@wsu.edu)  
 Co-Instructor – Eric Nilsson, Abelson Hall 507, 225-1835, [nilsson@wsu.edu](mailto:nilsson@wsu.edu)  
**Learning Objective -**  
 Current literature based course on the Systems Biology of Reproduction. Learning Systems approaches to the biology of reproduction from a molecular to physiological level of understanding.

**Schedule/Lecture Outline –**

January	9 & 11	Week 1	Systems Biology Introduction
	16 & 18	Week 2	Molecular/ Cellular/ Reproduction Systems
	23 & 25	Week 3	Sex Determination Systems
Jan /Feb	30 & 1	Week 4	Male Reproductive Tract Development & Function
February	6 & 8	Week 5	Female Reproductive Tract Development & Function
	13 & 15	Week 6	Gonadal Developmental Systems Biology
	20 & 22	Week 7	Testis Systems Biology
	27 & 29	Week 8	Ovary Systems Biology
March	5 & 7	Week 9	Epigenetics and Transgenerational Gonadal Disease
	11 – 15	Week 10	<b>Spring Break</b>
	19 & 21	Week 11	Gametogenesis/ Stem Cells/ Cloning
	26 & 28	Week 12	Hypothalamus- Pituitary Development & Function
April	2 & 4	Week 13	Reproductive Endocrinology Systems
	9 & 11	Week 14	Fertilization & Implantation Systems
	16 & 18	Week 15	Fetal Development & Birth Systems
	23 & 25	Week 16	Assisted Reproduction/Contraception
Apr/May	30 & 2	Week 17	Exam or Grant Review

**Spring 2024 – Systems Biology of Reproduction**  
**Lecture Outline – Reproductive Endocrinology Systems**  
 Michael K. Skinner – Biol 475/575  
 CUE 418, 10:35-11:50 am, Tuesday & Thursday  
 April 2, 2024  
 Week 13

**Reproductive Endocrinology Systems**

- Female Reproductive Endocrinology
  - Summary
  - Steroidogenesis and Action
  - Cycle
- Male Reproductive Endocrinology
  - Summary
  - Steroidogenesis and Action
  - Gonadotropins
- Endocrine Regulation
  - Neuroendocrinology
  - Endocrine Disruptors

Spring 2024 – Systems Biology of Reproduction  
**Discussion Outline – Reproductive Endocrinology Systems**  
 Michael K. Skinner – Biol 475/575  
 CUE 418, 10:35-11:50 am, Tuesday & Thursday  
 April 4, 2024  
 Week 13

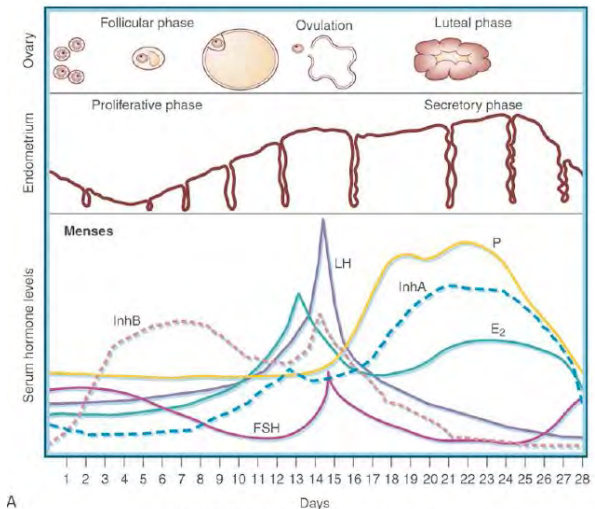
**Reproductive Endocrinology Systems**

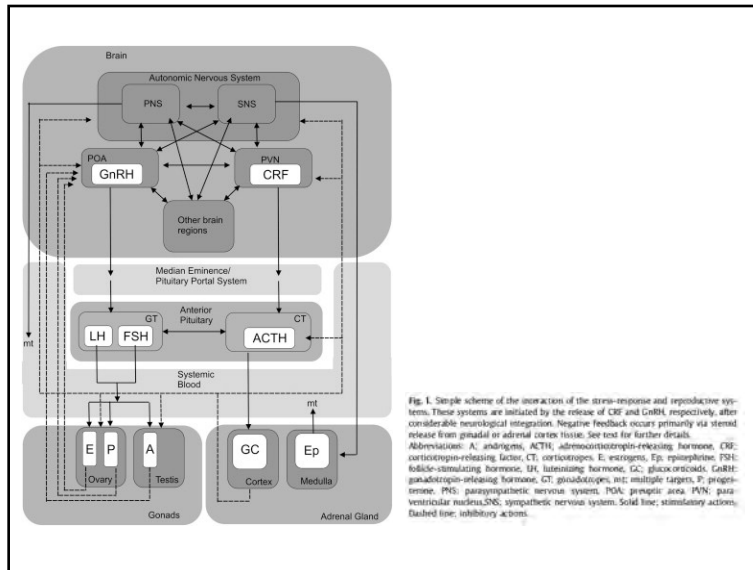
**Primary Papers:**

1. Stotzel, et al. (2012) Theriogenology 78:1415-1428
2. Toufaily, et al. (2020) J Endocrinology 244(1):111-122
3. Barban, et al. (2016) Nat Genetics 48:1462

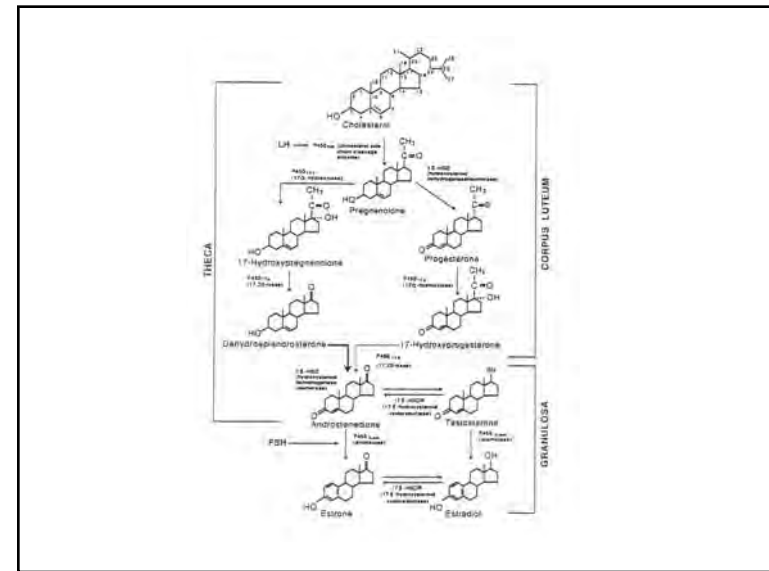
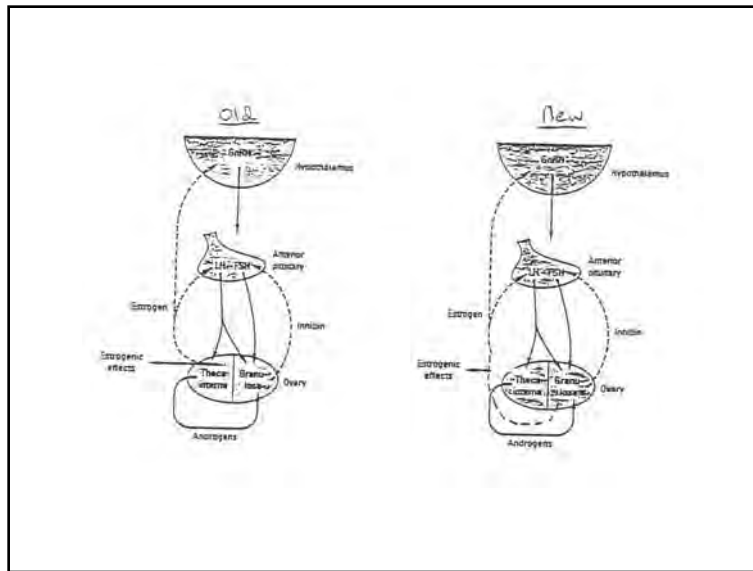
**Discussion**

- Student 9: Reference 1 above
- What endocrine parameters were synchronized and what regulatory agent tested?
  - What experimental model was used?
  - What model was established and validated?
- Student 10: Reference 2 above
- What was the experimental design and technology used?
  - Why is the LH surge important?
  - What was identified regarding the progesterone regulated phasic LH secretion?
- Student 11: Reference 3 above
- What was the experimental design and technology used?
  - What reproductive factors were used and what traits were associated?
  - What conclusions can be drawn on genomic control of reproduction?

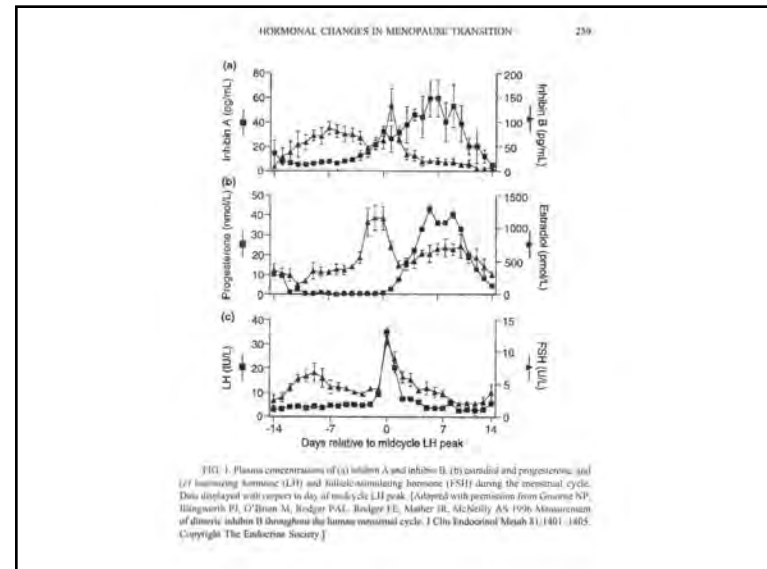
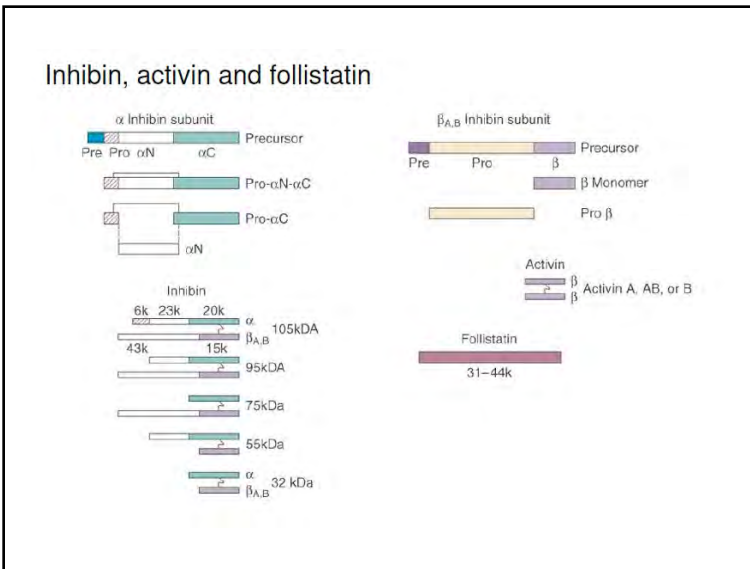
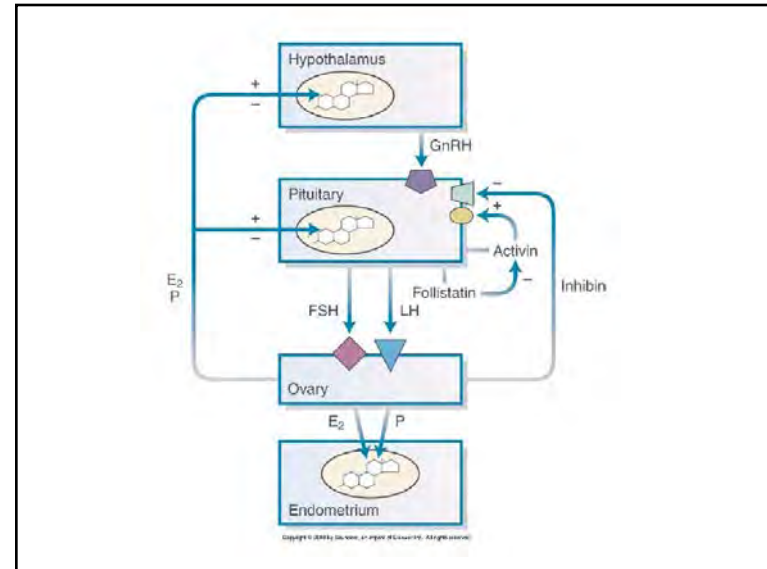
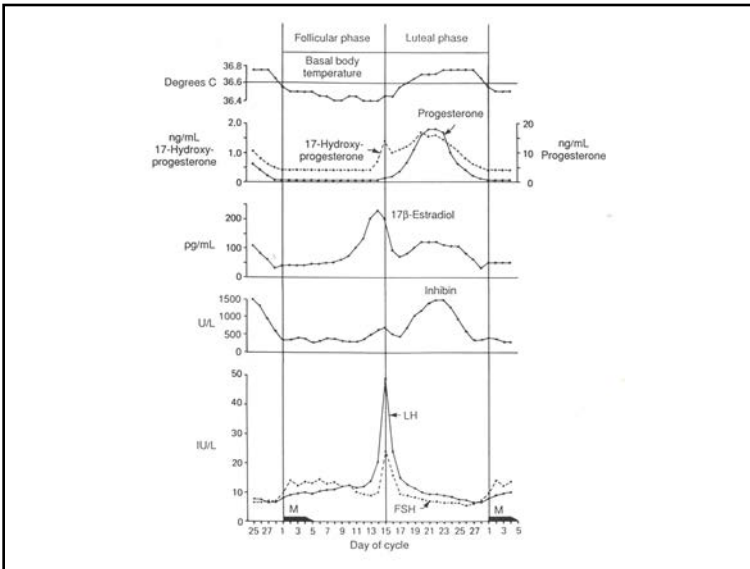


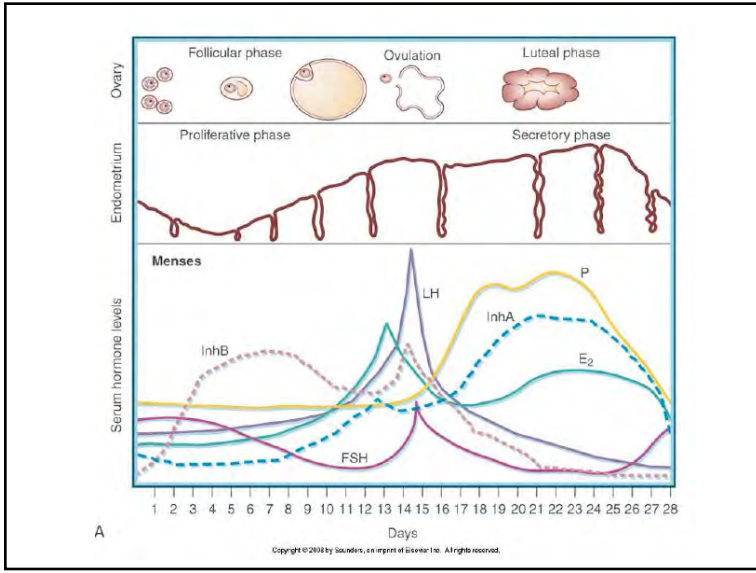
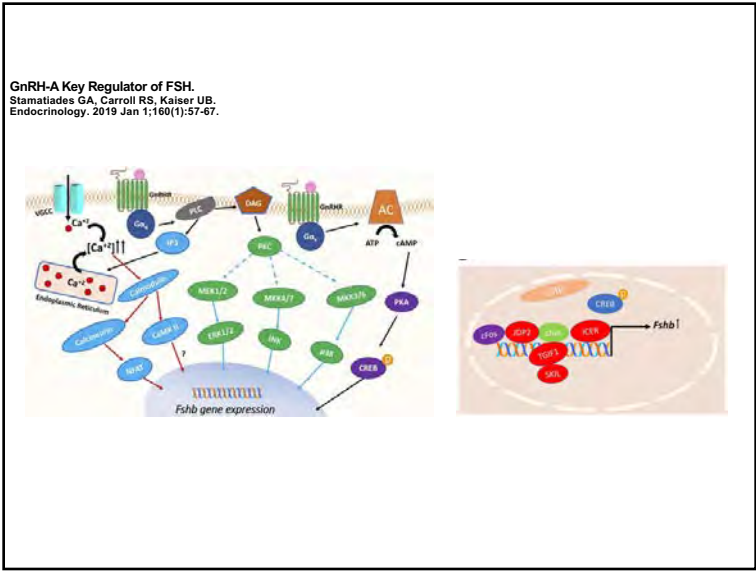
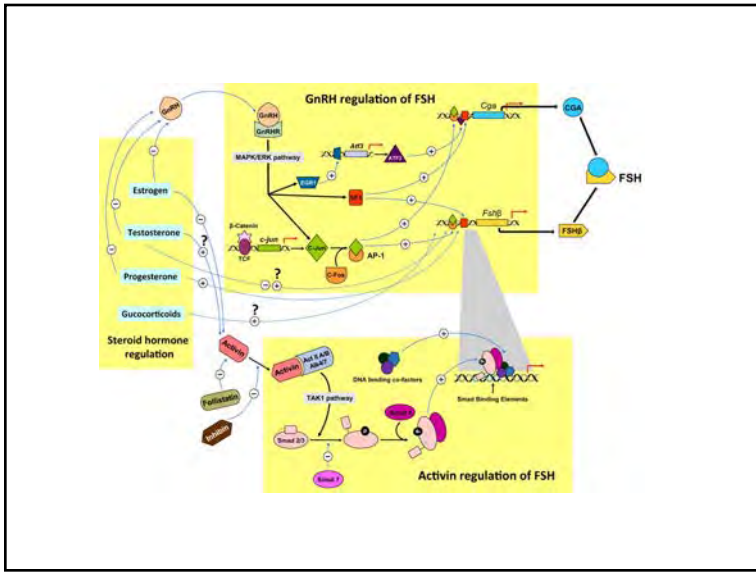
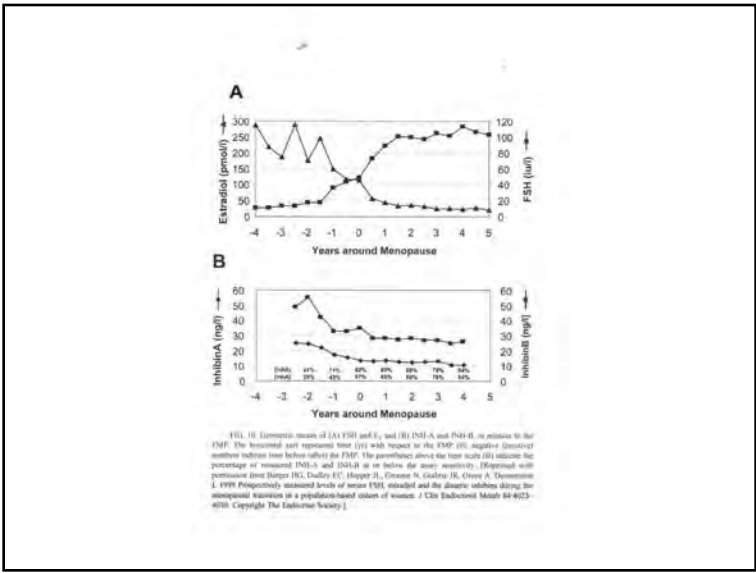


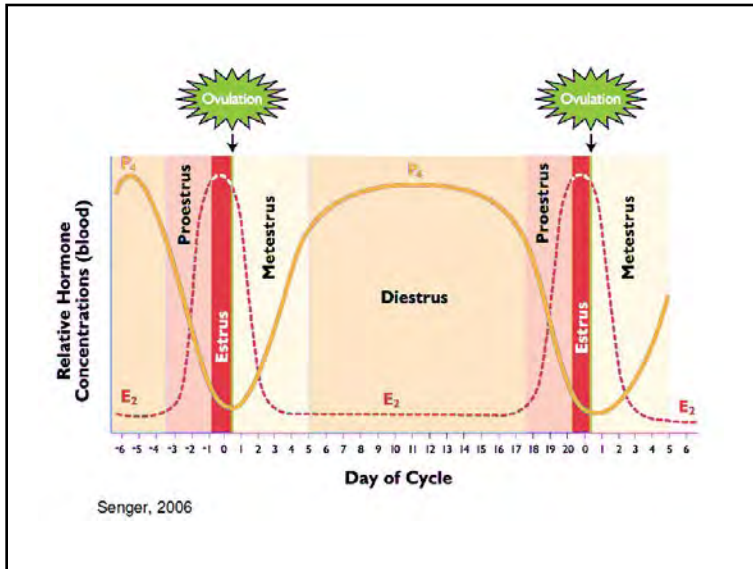
# Female Reproductive Endocrinology



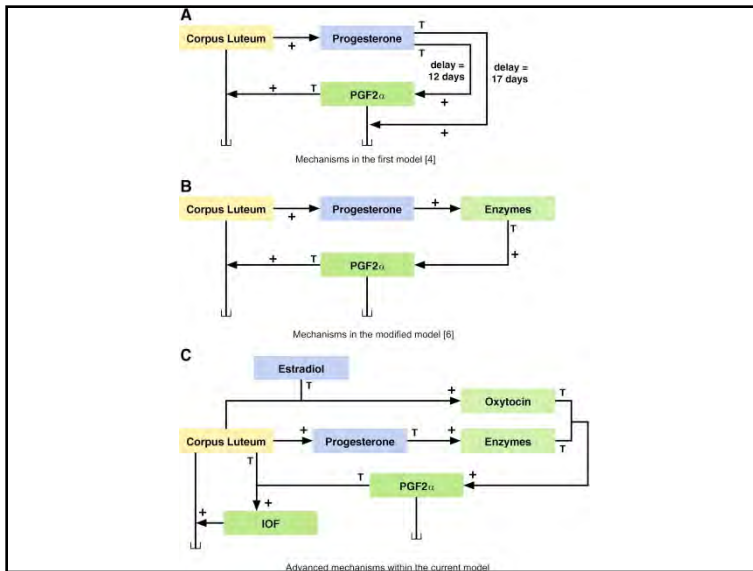
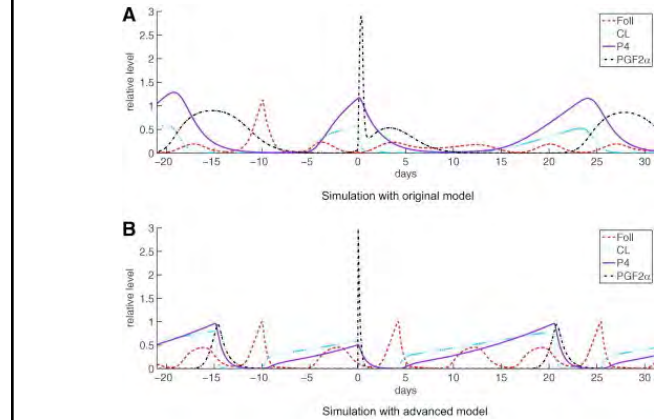




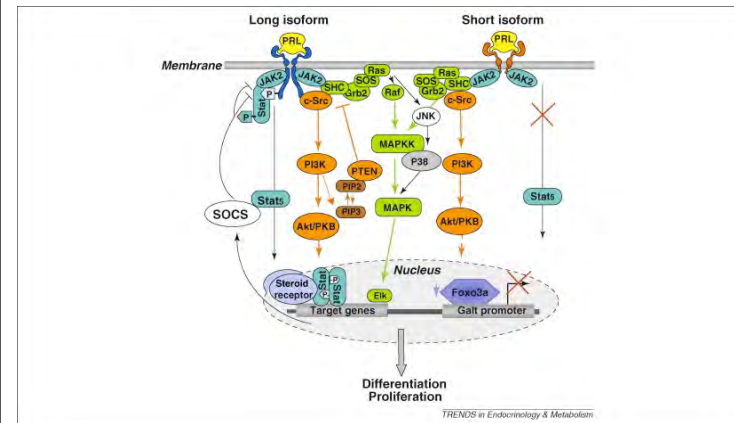


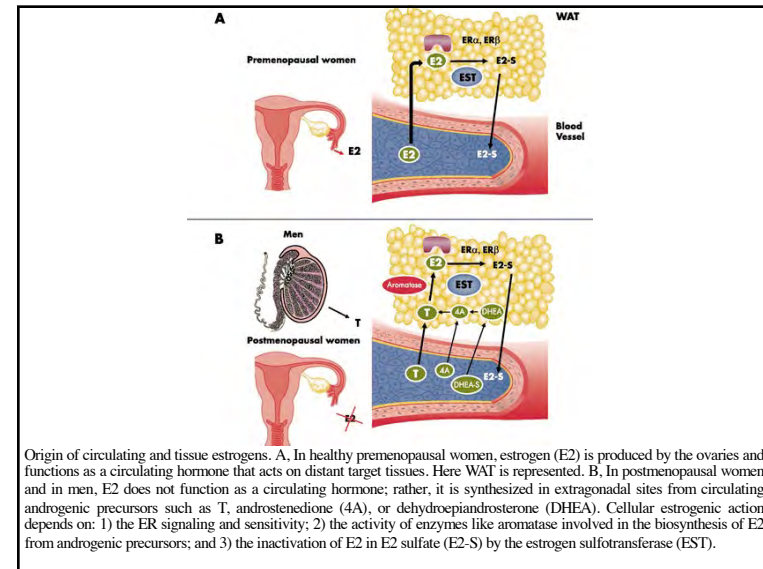
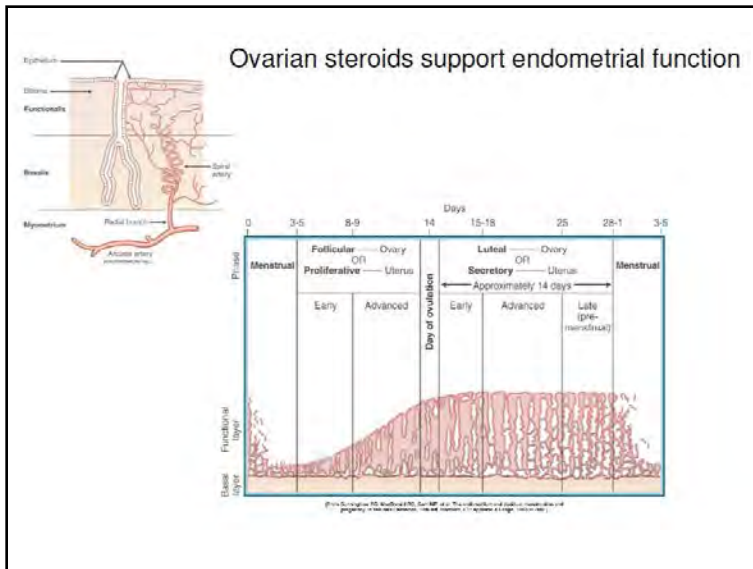
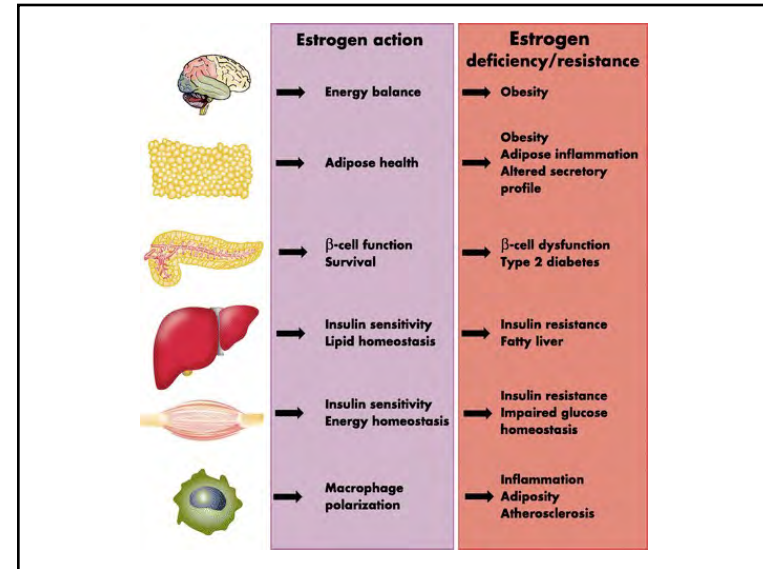
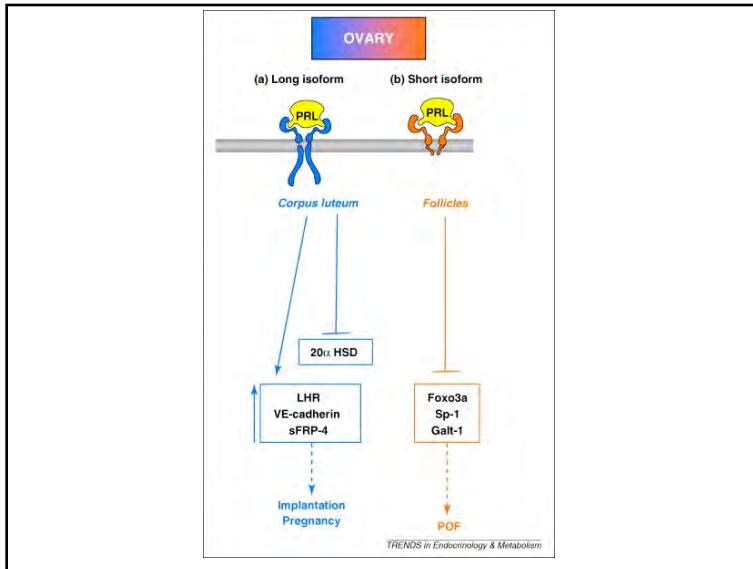


Advances in modeling of the bovine estrous cycle: synchronization with  $\text{PGF2}\alpha$ .  
 Stözel C, Plöntzke J, Heuwieser W, Röblitz S. *Theriogenology*. 2012 Oct 15;78(7):1415-28.



Impact of prolactin receptor isoforms on reproduction.  
 Binart N, Bachelot A, Bouilly J.  
*Trends Endocrinol Metab*. 2010 Jun;21(6):362-8.

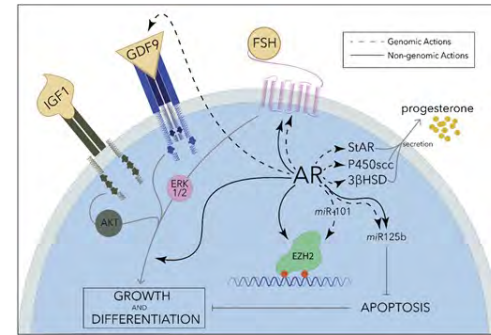




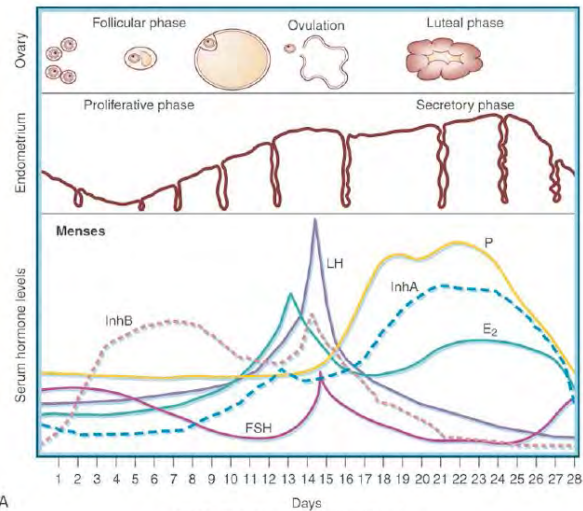
**Physiological and Pathological Androgen Actions in the Ovary.**  
 Astapova O, Minor BMN, Hammes SR.  
 Endocrinology. 2019 May 1;160(5):1166-1174.

**Table 1. Summary of Available Evidence From Studies of Androgen Actions in the Ovary**

Observed Effect	Experimental Species and Design	DHT Dose	Reference
Increased preantral follicle growth	Rat <i>In vitro</i>	1 nM and higher	(20, 21)
	<i>In vivo</i>	83 µg continuous daily-release pellet	(21)
Increased FSH receptor mRNA expression	Monkey <i>In vivo</i>	145 µg/kg/d for 5 d	(22)
	Rat <i>In vitro</i>	1 nM and higher	(20)
Increased FSH receptor protein expression	Monkey <i>In vivo</i>	0.4 or 4 mg/kg of testosterone for 3 d	(23)
	Mouse, human <i>In vitro</i>	25 nM	(24)
Increased granulosa cell proliferation	Rat <i>In vitro</i>	100 nM	(25)
	Pig <i>In vitro</i>	500 nM	(26, 27)
Reduced apoptosis of follicles	Mouse <i>In vitro</i>	25 nM	(24, 28)
	Rat <i>In vitro</i>	100 nM	(25)
Increased expression of steroidogenic enzymes StAR, P450 <sub>scc</sub> , and 3βHSD in mature granulosa cells	Mouse <i>In vivo</i>	5 µg/g 4 h prior to RNA isolation	(29)
	Human <i>In vitro</i>	100 nM	

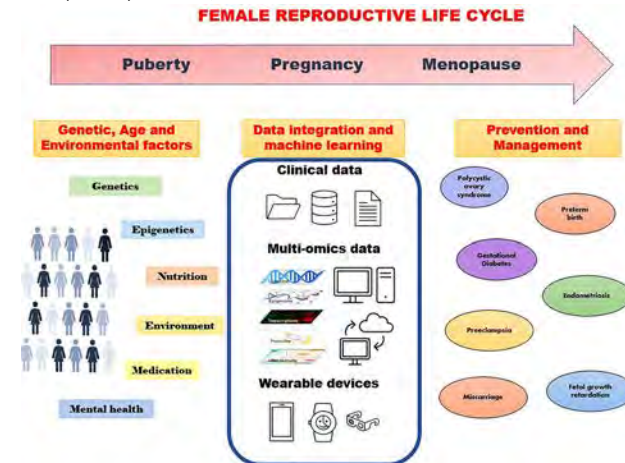


AR actions in granulosa cells. AR works through genomic (dashed lines) and nongenomic (solid lines) pathways to promote growth and differentiation of granulosa cells, suppress apoptosis and, in dominant follicles, increase steroid synthesis. The effects of granulosa growth factors IGF1, GDF9, and FSH are all enhanced in the presence of androgens through extranuclear activity of AR. At the gene level, AR induces the expression of antiapoptotic miRNA miR125b, multiple steroidogenic enzymes, GDF9, and FSH receptor, and regulates the activity of DNA methyltransferase Ezh2 through modulation of Ezh2 phosphorylation as well as transcriptional regulation of the miRNA miR101 (24–28, 33).



Copyright © 2008 by Saunders, an imprint of Elsevier Inc. All rights reserved.

**Multi-omics and machine learning for the prevention and management of female reproductive health.**  
 Kharb S, Joshi A.  
 Front Endocrinol (Lausanne). 2023 Feb 23;14:1081667.

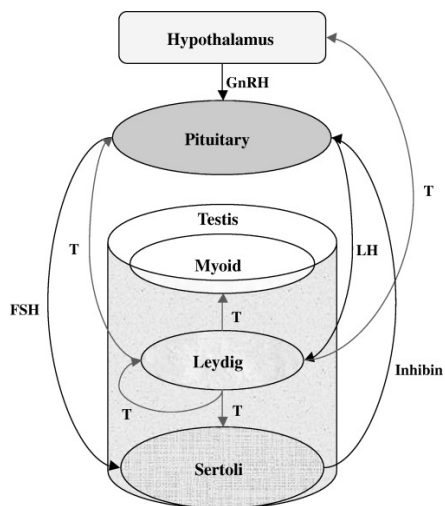
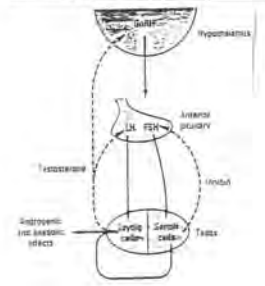


Machine learning approaches using various data to understand genetic and environmental factors towards prevention and management of disorders through the family reproductive life cycle.

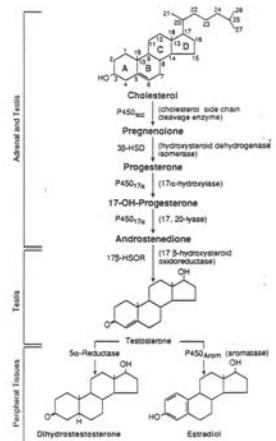
# Male Reproductive Endocrinology

Table 22-4. Body changes at puberty in boys (male secondary sex characteristics).

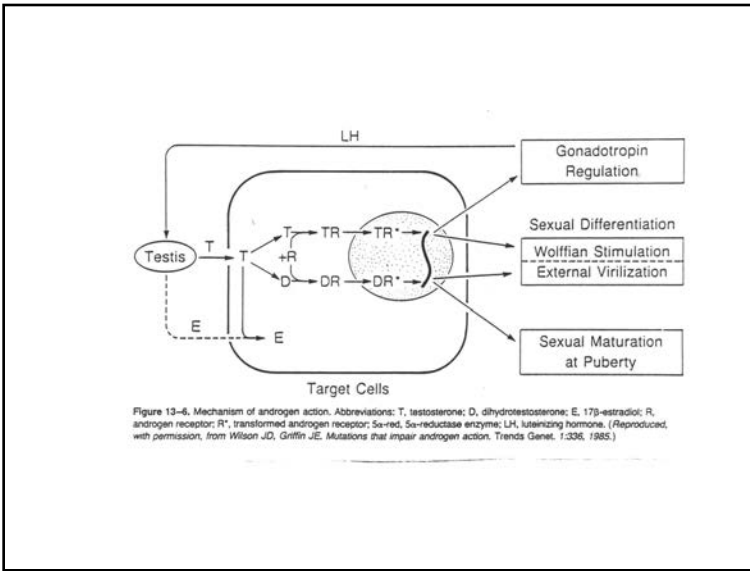
<b>External genitalia:</b> Penis increases in length and width. Scrotum becomes pigmented and rugose.
<b>Internal genitalia:</b> Seminal vesicles enlarge and secrete and begin to form mucosa. Prostate and bulbourethral glands enlarge and secrete.
<b>Voice:</b> Larynx enlarges, vocal cords increase in length and thickness, and voice becomes deeper.
<b>Hair growth:</b> Beard appears. Hairline on scalp recedes anteriorly. Pubic hair grows with male (anguli with apex up) pattern. Hair appears in axillae, on chest, and around anus; general body hair increases.
<b>Mental:</b> More aggressive, active attitude, interest in opposite sex develops.
<b>Body conformation:</b> Shoulders broaden, muscles enlarge.
<b>Skin:</b> Sebaceous gland secretion thickens and increases (contributing to acne).



**Figure 1.** Hormonal regulation of spermatogenesis. Most hormones shown can have both positive and negative effects, either at the level of receptor activation/desensitization or through activation and repression of downstream targets. GnRH, gonadotrophin releasing hormone; LH, luteinizing hormone; FSH, follicle stimulating hormone; T, testosterone.



**Figure 13-5.** Pathway of testosterone formation in the testis and conversion of testosterone to active metabolites in peripheral tissues.



Targeted gene deletion – endocrine factors regulating spermatogenesis

FSHR  $-/-$  quantitative decrease in sperm production and some morphological abnormalities, fertile

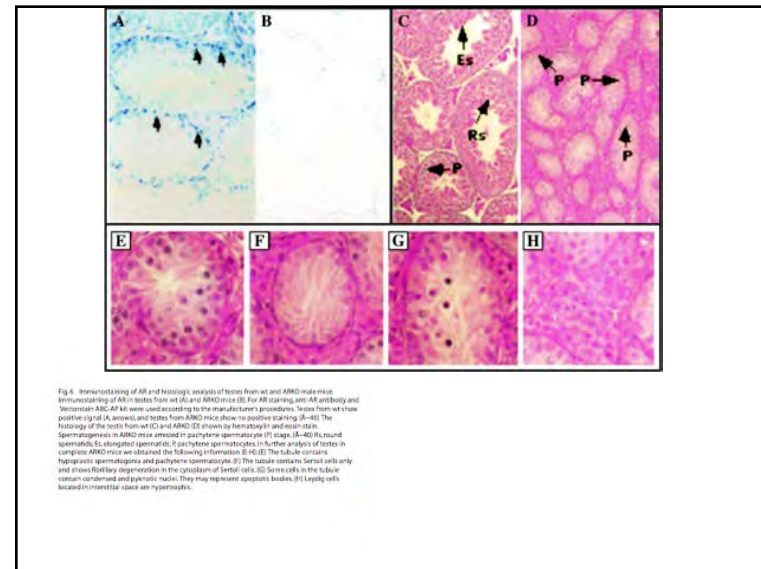
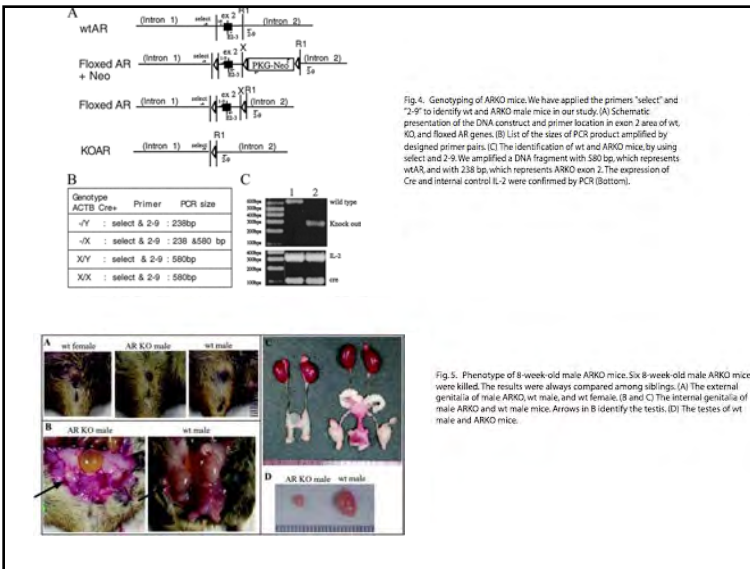
FSH beta  $-/-$  same as FSHR, phenotypically normal with FSH

LHR  $-/-$  low T, cryptorchid, infertile, rescued with T

AR (*tfm*  $-/\gamma$ ) – pseudohermaphroditism, cryptorchid, infertile

GnRH  $-/-$  (*hpg*) – cryptorchid, rescue with T and FSH

ER $\alpha$   $-/-$  secondary infertile due to efferent duct defect



### Pem Homeobox Gene Promoter Sequences that Direct Transcription in a Sertoli Cell-Specific, Stage-Specific, and Androgen-Dependent Manner in the Testis *in Vivo*

MANJEET K. RAO, CHAD M. WAYNE, MARVIN L. MEISTRICH, AND MILES F. WILKINSON  
 Departments of Immunology (M.K.R., C.M.W., M.F.W.) and Experimental Radiation Oncology (M.L.M.), The University of Texas M. D. Anderson Cancer Center, Houston, Texas 77030

Although many genes are expressed selectively in Sertoli cells, regulatory sequences sufficient to drive Sertoli cell-specific expression in the postnatal and adult testis *in vivo* have not been identified. In the present study, we identified promoter sequences from the *Pem* homeobox gene that direct Sertoli cell-specific expression in an androgen-dependent and stage-specific manner. Immunohistochemical and RNA analysis demonstrated that 0.6-kb 5'-flanking sequence directed transgene expression specifically in the testis and the epididymis but not in any other tissues tested. In the adult testis, this promoter fragment targeted the transgene expression specifically to Sertoli cells during stages N-VIII of the seminiferous epithelial cycle, thereby mimicking the expression pattern of the endogenous *Pem* gene. This promoter fragment also recapitulated *Pem*'s normal

postnatal expression pattern, as it directed transcript induction between d 6 and d 9 post partum. Deletion of 0.3 kb from the 5'-end of the transgene had no effect on androgen-dependent Sertoli-specific expression but altered stage-specific expression in adult testes and caused premature postnatal expression. Our results suggest that there are at least two regulatory regions in the *Pem* proximal promoter: one that directs androgen receptor-dependent expression specifically in Sertoli cells within the testis and another that confers stage-specific expression in neonates and adults by acting as a negative regulator. To our knowledge, this is the first identification of regulatory regions that direct faithful developmentally regulated gene expression in postnatal and adult Sertoli cells *in vivo*. (*Molecular Endocrinology* 17: 223-233, 2003)

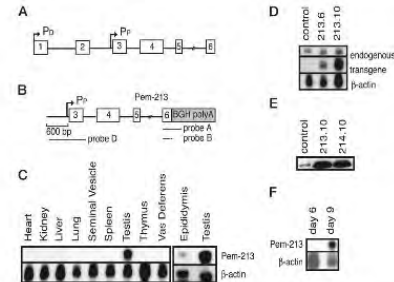


Fig. 1. A Transgene Harboring 0.6-kb *Pem* Pp 5'-Flanking Sequence Is Expressed in a Normal Developmentally Regulated Manner Specifically in Male Reproductive Tissue *in Vivo*.  
 A, Schematic diagram of the *Pem* gene. Probe A corresponds to the region of the transgene shown; probe B corresponds to the endogenous *Pem* gene and thus is complementary with transgene mRNA over only a short region. B, Schematic diagram of the *Pem*-213 transgene. Probe A corresponds to the region of the transgene shown; probe B corresponds to the endogenous *Pem* gene and thus is complementary with transgene mRNA over only a short region. C, RPA of total cellular RNA (10 µg) from adult tissues from *Pem*-213 mice using probe A. The protected RNA fragment was approximately 200 nt. D, RPA of adult testes RNA (10 µg) from two *Pem*-213 founder lines using probe B to distinguish between endogenous and *Pem* transgene mRNA. The protected band sizes were approximately 180 nt and approximately 150 nt for endogenous and transgene mRNA, respectively. E, Western blot analysis of *Pem* protein expression in *Pem* transgenic mice and control (nontransgenic) mice. The *Pem* bands comigrated with that of recombinant *Pem* (data not shown). F, RPA of testes RNA (10 µg) from 6- and 9-d-old *Pem*-213.6 mice using probe A. A  $\beta$ -actin probe was included in all annealing reactions as a loading control (the protected band was ~35 nt).

### 2. Nongenomic Actions of Androgen in Sertoli Cells

27

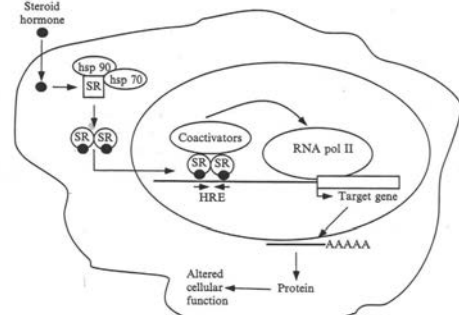
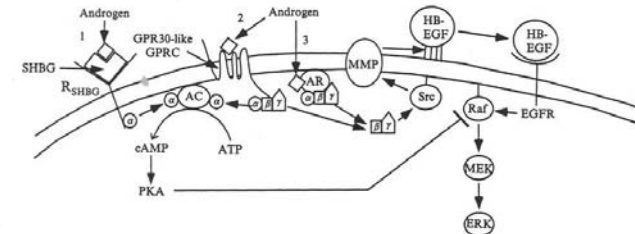
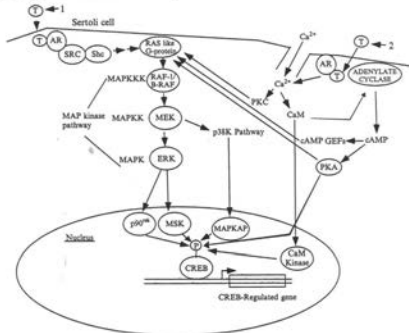


Figure 1 The classical mechanism of steroid action. Steroid hormones diffuse passively into the cell and combine with their cognate receptors in either the cytoplasm or the nucleus. In the cytoplasm, the binding of steroid to the receptor causes conformational changes in the receptor, allowing it to be released from heat shock proteins. The receptors then dimerize and migrate to the nucleus. Once in the nucleus, the steroid-bound receptor binds to specific hormone response elements (HREs) in the promoters of genes and recruits coactivator proteins that in turn alter chromatin structure and recruit RNA polymerase to the transcription initiation site. As a result, mRNA and proteins are produced that regulate cellular functions. Adapted from Onate, 2001, with permission from Humana Press, Inc.

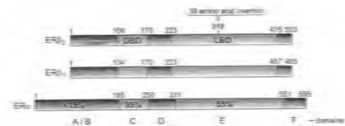


2. Nongenomic Actions of Androgen in Sertoli Cells

45



**Figure 5** Potential testosterone signaling pathways in Sertoli cells: two potential pathways are proposed for testosterone-induced CREB phosphorylation. In one pathway (left side, 1), testosterone (T) binding to AR allows AR to bind with and activate Src tyrosine kinase, resulting in the stimulation Ras and Raf-1 kinase and the activation of the MAP kinase pathway. In the second pathway (right side, 2), testosterone binding to AR induces Ca<sup>2+</sup> influx into Sertoli cells, causing calmodulin (CaM) to stimulate CaM kinase to translocate to the nucleus and transiently phosphorylate CREB within 1 minute. Ca<sup>2+</sup> also induces a slower, more persistent pathway in which protein kinase C (PKC), guanine nucleotide exchange factors (GEFs), or FKA stimulates Ras or a Ras-like GTP binding protein, resulting in the activation of the MAP kinase pathway. Both pathways are capable of inducing CREB phosphorylation and CREB-mediated gene expression.



**Fig. 1.** Schematic representation of ER $\alpha$  and ER $\beta$ . The second receptor domain and homology to ER $\alpha$  are indicated on the structure. The amino acid sequence is numbered according to the published rat ER $\beta$  sequence (Koppe et al., 1996). LBD, ligand binding domain; DBD, DNA binding domain.

**Table 3.** Summary of data from knockout and mutant mouse models relative to ovarian function\*

Model	Serum levels			Follicle type	OVX	Rescue	Follicle	Reference	
	FSH	LH	T						
ERK1 $\alpha$	+	+	+	Normal	+	+	ND	No	Sullivan et al., 1993; Coose et al., 1997; Kato et al., 1998
ERK2	+	+	+	Normal	+	+	ND	+	Carroll et al., 1996; Kato et al., 1998
ERK1 $\beta$	+	+	ND	+	+	+	ND	+	Frutkin et al., 1998; Frutkin et al., 1999
ERK2 $\beta$	+	+	+	Normal	+	+	+	+	Schmidt et al., 1998
ERK1 $\alpha$	ND	+	+	Normal	+	+	+	+	Kato et al., 1997
ERK2	ND	ND	ND	ND	Normal	+	+	+	Wolfin et al., 1994a,b

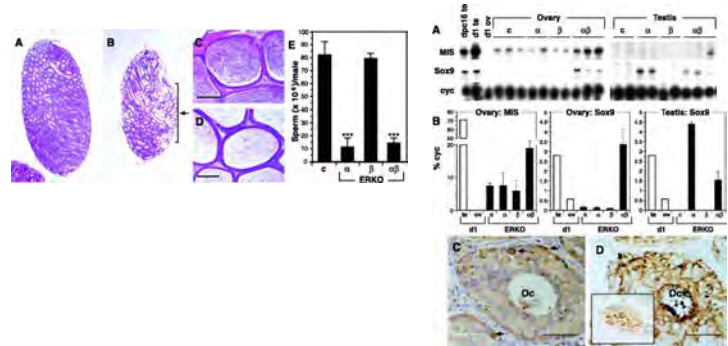
\* +, increased; ND, not detectable; +, not reported; F, decreased; +, increased; +, increase compared with OVX.

J. F. Couse, J. A. Pineda, M. A. M. M. and P. J. M. (1999) 11, 1189-1194

**Postnatal Sex Reversal of the Ovaries in Mice Lacking Estrogen Receptors and**

J. F. Couse, 1 S. Curtis Hewitt, 1 D. O. Bunch, 2 M. Sar, 3 V. R. Walker, 1 B. J. Davis, 4 K. S. Korach 1\*

© K. Korach



**Phenotypes of  $\alpha$ ERKO and  $\beta$ ERKO mice**

Tissue	Observation	
	$\alpha$ ERKO	$\beta$ ERKO
Testis	Progressive dilation and degradation of tubules, low sperm count, nonfunctional sperm	Normal structure, normal sperm count and fertility
Uterus	Immature, unresponsive to estradiol	Normal development and response to estrogen
Ovary	Enlarged, hemorrhagic cysts, follicles arrested at preantral stage, no corpus lutea, no ovulation, elevated serum estrogen and T levels	Subfertile, infrequent and inefficient ovulation; normal estrogen and T
Mammary, female	Ducts do not develop beyond epithelial rudiment at nipple, no alveolar development	Normal, fully functional. Able to nurse offspring
Pituitary	FSH- $\beta$ , LH $\beta$ , $\alpha$ GSH, mRNAs all elevated, prolactin mRNA reduced	Normal serum gonadotropin levels
Cardiovascular (male)	Lower basal nitric oxide, estrogen protection in vascular injury not lost, increase in calcium channels, delayed cardiac depolarization	?
Bone	Shorter, female, smaller diameter, male, lower density	Normal
Brain	MAA, no intromission, ejaculation decreased aggression; female, no receptive behaviors	Normal sexual behavior

ERKO, Estrogen receptor knockout; FSH $\beta$ , follicle-stimulating hormone;  $\alpha$ GSH, gonadotropin subunit alpha; LH, luteinizing hormone; T, testosterone.

### Estrogen Deficiency, Obesity, and Skeletal Abnormalities in Follicle-Stimulating Hormone Receptor Knockout (FORKO) Female Mice\*

NATALIA DANILOVICH, P. SURESH BABU, WEIBONG XING, MARIA GERDES, HANUMANTHAPPA KRISHNAMURTHY, AND M. RAM SAIRAM  
 Molecular Reproduction Research Laboratory, Clinical Research Institute of Montreal, Montreal, Quebec H3W 2B7, Canada

**TABLE 2.** Examination of vaginal cytology

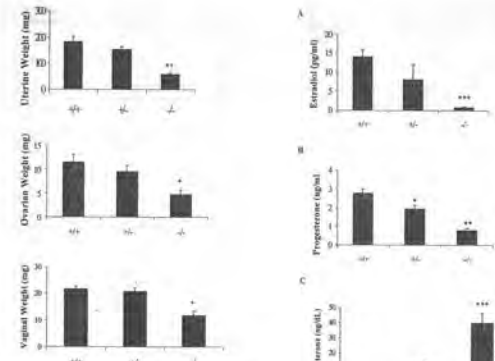
Genotype	Length of estrous cycle (days)	Duration of estrus (days)	Presence of epithelial and cornified cells
FORKO	None	None	Occasional
Heterozygous	6.6 ± 3.5 <sup>a</sup>	1.5 ± 0.2	Normal
Wild-type	4.4 ± 0.3	2.2 ± 0.4	Normal

Values are expressed as mean SEM. <sup>a</sup>,  $P < 0.05$ .

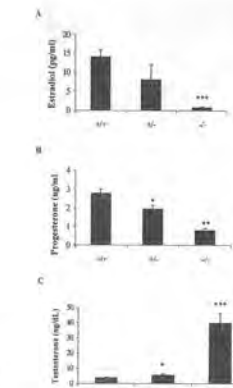
**TABLE 1.** Breeding performance

Number of animals	Male × Female	Period between mating and first litter (days)	Number of pups in first litter	Weaning success in first litter (%)
7 × 7	+/+ × +/+	21.4 ± 0.2	9.8 ± 0.5	95.9 ± 0.7
10 × 10	+/+ × +/-	32 ± 2.5 <sup>a</sup>	5.6 ± 0.9 <sup>a</sup>	75 ± 1.5 <sup>a</sup>
16 × 16	+/- × +/-	38.2 ± 3.3 <sup>a</sup>	4.7 ± 2.3 <sup>a</sup>	68.7 ± 2.5 <sup>a</sup>

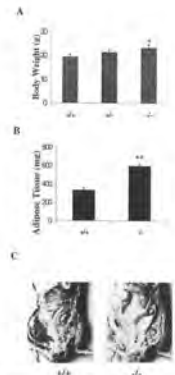
Weaning success – animals surviving on day 21. All results are expressed as mean SEM. <sup>a</sup>,  $P < 0.05$ .



**Fig. 2.** Growth status of reproductive tissues in wild-type, heterozygous, and FORKO female mice. The wet weight of two uteri, ovaries, and vagina (mg) in +/+ (wild-type), +/- (heterozygous), and -/- (FORKO) are shown. Values represent the mean ± SEM for 10 animals per genotype. Comparisons were made against wild-type animals. <sup>a</sup>,  $P < 0.007$ , <sup>\*\*</sup>,  $P < 0.001$ .

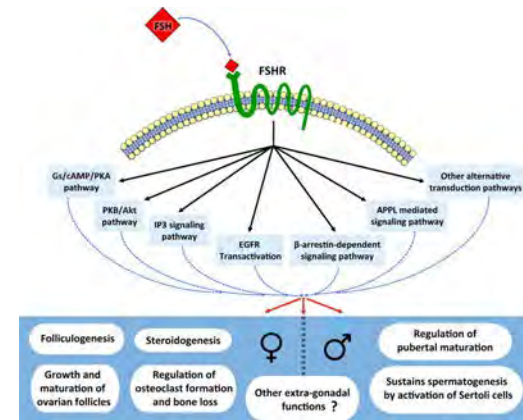


**Fig. 3.** Steroid hormone levels in serum of wild-type, heterozygous, and FORKO female mice. The levels of estradiol-17β (ng/ml) (A), progesterone (ng/ml) (B), and total testosterone (ng/dl) (C) of individual serum samples of +/+ (wild-type), +/- (heterozygous), and -/- (FORKO) mice determined by radioimmunoassays are shown. Values represent the mean ± SEM for 7–10 animals per genotype. Comparisons were made against wild-type animals. <sup>a</sup>,  $P < 0.05$ , <sup>\*\*</sup>,  $P < 0.005$ , <sup>\*\*\*</sup>,  $P < 0.001$ .



**Fig. 5.** Evidence of obesity in FORKO mice. A, Body weight (g) of 3-wk-old +/+ (wild-type), +/- (heterozygous), and -/- (FORKO) female mice are shown. The difference of body weight between +/+ and -/- animals is statistically significant ( $P < 0.05$ ). The brown adipose tissue located in the retroperitoneum of the +/+ and -/- animals is shown. Values are expressed as the mean ± SEM. The increase in adipose tissue (AT) in -/- mice is highly significant ( $P < 0.001$ ) when compared to a 10% of body weight (data not shown). C, The histological sections of abdominal adipose tissue of +/+ and FORKO (-/-) animals are shown. Note the extensive amount of AT in +/+ mice compared to the -/- mice in FORKO (-/-) mice.

and experience loss of estrogen. Because these changes do not appear in the wild-type, we continued the investigation until about a year, sample with examination of the skeleton revealed the obvious loss in the upper limbs in a variation of 8-month-old FORKO female mice (Fig. 6E). At 8 months of age, the skeleton of wild-type mice showed a normal curve





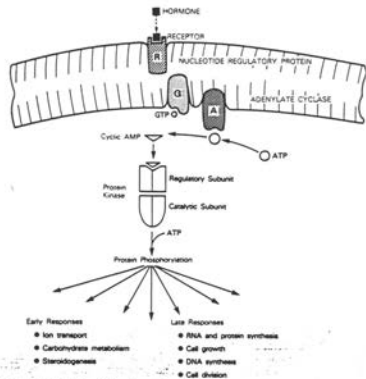


Figure 4-15 • Hormonal stimulation of adenylate cyclase in peptide-regulated adenosine monophosphate (cAMP) leads to activation of protein kinase and phosphorylation of regulatory protein substrates involved in the early and late aspects of hormone action.

Table 1. Natural Loss of Function Mutations of the FSH Receptor: Correlation between Receptor Function and the Phenotype

Phenotype	Finnish Patients*	Patient 2	Patient 1†
Pubertal development	± Delayed	Normal	Normal
Amenorrhea	Primary	Primary	Secondary
E <sub>2</sub> (pmol/liter)			
Basal	30	40-60	70-150
After FSH stimulation	NA	40-80	240
Inhibin B (pg/ml)			
Basal	NA	30	50
After FSH stimulation	NA	30	125
Ultrasonography:			
Follicle size (mm)			
Basal	NA	2-3	4-5
After FSH stimulation	NA	2-3	5-8.3
Follicular development	Primordial and primary follicles	Antral follicles	Antral follicles
In vitro activity of FSHR mutants (adenylate cyclase stimulation, % of wild-type receptor)	Nonsignificant	12 ± 3%	24 ± 4%
		Leu601Val	Arg573Cys

NA, Not available.  
\* Ref. 4.  
† Ref. 8.

### Normal Prenatal but Arrested Postnatal Sexual Development of Luteinizing Hormone Receptor Knockout (LuRKO) Mice

Fu-Ping Zhang, Matti Poutanen, Johannes Wilberts, and Ryo Hultén

Department of Physiology (F.-P.Z., M.P., J.W.)  
Institute of Biotechnology  
University of Turku  
FIN-20520, Turku, Finland  
Department of Cell and Molecular Biology (J.W.)  
Karolinska Institute  
S-17177 Stockholm, Sweden

To study further the role of gonadotropins in reproduction functions, we generated mice with LH receptor (LHR) knockout (LuRKO) by inactivating, through homologous recombination, exon 11 in the LHR gene. LuRKO males and females were born phenotypically normal, with testes, ovaries, and genital structures indistinguishable from their wild-type (WT) littermates. Postnatally, testicular growth and development, and external genital and accessory sex organ maturation, were blocked in LuRKO males, and their spermatogenesis was arrested at the round spermatid stage. The number and size of Leydig cells were dramatically reduced. LuRKO females also displayed underdeveloped external genitalia and uteri postnatally, and their age of vaginal opening was delayed by 5-7 days. The 1- $\beta$ - $\alpha$  oocytes were smaller, and histological analysis revealed follicles up to the early antral stage, but no preovulatory follicles or corpora lutea. Reduced gonadal sex hormone production was found in each sex, as was also reflected by the suppressed accessory sex organ weights and elevated gonadotropin levels. Comparison of mutants of nuclear gene cells in the LuRKO males differs from other hypogonadotropic/hypogonadal mouse models, suggesting a role for FSH in this process. In females, FSH appears to stimulate developing follicles from the primordial to early antral stage, and LH to the antral stage beyond this stage. Hence, in each sex, the intratesticular sex differentiation in LuRKO mice is arrested, but it has a crucial role postnatally for attainment of sexual maturity. The LuRKO mouse is a close phenotypic mimic of recently characterized human patients with inactivating LHR mutations, although this lack of gonadotropin responsiveness in LuRKO males suggests

that the intratesticular sex differentiation in this species is not dependent on LH action. (*Molecular Endocrinology* 15: 172-183, 2001)

#### INTRODUCTION

The two gonadotropins, LH and FSH, have a key role in the differentiation and maturation of reproductive sexual organs and functions. After identification of genes for the gonadotropin subunits and gonadotropin receptors [1], their mutations have been discovered in mice and humans with various types of hypogonadism (for a review, see Ref. 2). Mutations of the FSH subunit gene cause sterility with arrested follicular maturation in women and oligospermia in men. Inactivating FSHR mutations in women cause the same phenotype as the ligand mutations, but in men the phenotype is milder with only variable impairment of spermatogenesis [3]. Knockout models for both FSH and FSHR have been produced [3-6], and they display complex phenotypes of the human FSHR mutations. A discrepant finding in the oligospermia observed in the two men so far described with FSHR mutation [5, 6], which is not found in the receptor or ligand knockout mice produced [3-6] in men with an inactivating FSHR mutation [7]. Hence, the necessity of FSH for spermatogenesis still remains controversial. The consequence of inactivation of LH action also remains to be clarified. Only a single man with LH2 mutation has been reported [8]; he presented with normal sexual differentiation at birth but total lack of postnatal sexual development. No woman with such a mutation has yet been described. Further, as these knockout models for LH or LH receptor (LHR) mice to human clinical consequences of inactivating LHR mutations in men [5]. Depending on completeness of the

### Characterization of mice deficient in aromatase (ArKO) because of targeted disruption of the *cyp19* gene

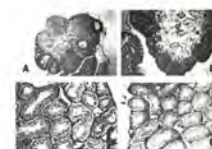
Chao-Yu R. Fimia<sup>1,2</sup>, Kathy H. Graves<sup>1</sup>, Albert F. Pawlowski<sup>1</sup>, and Eyan R. Simpson<sup>1,3,4</sup>

<sup>1</sup>Cell #1 and <sup>2</sup>Cell #104 Core, University of Texas Southwest Medical Center, 75730 Dallas (Texas), USA; <sup>3</sup>Department of Molecular Biology, University of California, Los Angeles Medical Center, 90094-1606, Los Angeles, CA, USA; and <sup>4</sup>Whitehead Institute for Biomedical Research, 750 Boylston Street, Cambridge, MA 02138, USA

© 2001 by Walter de Gruyter GmbH, University of California, San Francisco, CA, March 27, 2001 (received for review December 16, 2000)

Table 2. Organ weights, g

	Wild type	ArKO	
Testes	0.19 ± 0.02	0.07 ± 0.01	P < 0.001
Uterus	0.02 ± 0.005	0.04 ± 0.008	P = 0.008
Mean	0.27 ± 0.001	0.24 ± 0.002	NS
Normal ovules	0.23 ± 0.02	0.26 ± 0.03	P = 0.003
Abnormal ovules	0.08 ± 0.008	0.22 ± 0.01	P = 0.008



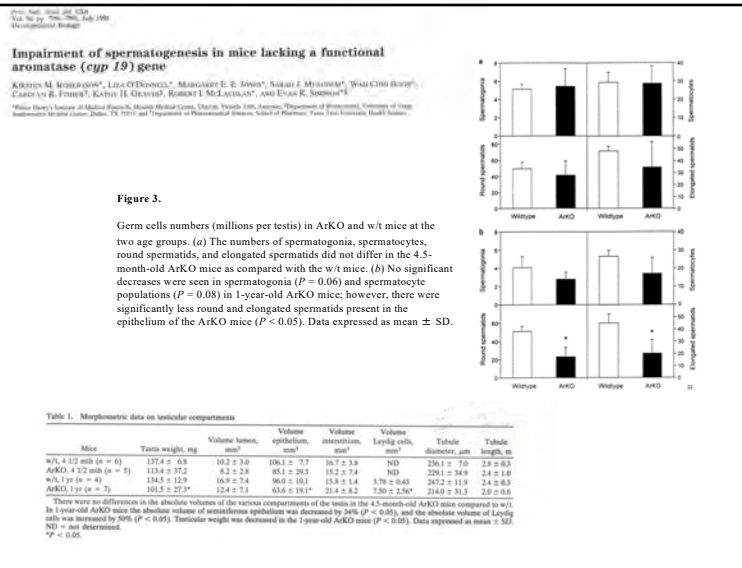
Mice ranging in age from 12-18 weeks were sacrificed, and organs were removed, fixed, and weighed on its analysis balance. Values are reported as mean ± SEM. Significance was determined by using the Student's t test. NS, not significant.

Fig. 1. Organ weights of ovaries of (A) wild-type (WT) and (B) ArKO mice. Values are reported as mean ± SEM. Significance was determined by using the Student's t test. NS, not significant.

Table 3. Serum gonadotropin concentrations

Sex	Females				Males				
	hFSH (ng/ml)	hLH (ng/ml)	hFSH (ng/ml)	hLH (ng/ml)	hFSH (ng/ml)	hLH (ng/ml)	hFSH (ng/ml)	hLH (ng/ml)	
Wild type	3.4	2.1	5.5	1.8	1.5	2.1	ND	<0.1	<0.1
ArKO	1.8	1.6	1.1	1.7	1.4	2.4	0.4	0.1	0.5
	0.6	0.5	0.6	2.3	2.0	2.7	0.5	0.2	0.3
	1.7	1.7	4.2	0.3	0.3	0.4	0.1	0.1	0.2
	1.4	2.0	7.0	0.5	0.7	0.4	0.1	0.01	0.2
ArKO	16.0	11.0	28.1	32	27	11	ND	0.5	0.8
	10.0	5.5	10.0	2.1	2.4	3.2	0.1	0.2	0.3
	0.4	0.1	10.2	3.0	3.4	4.6	1.1	1.0	1.4
	0.7	0.7	12.8	1.4	1.1	0.2	0.4	0.0	0.1
	0.8	0.2	14.4	1.2	1.0	0.1	1.8	1.2	2.1

Gonadotropins were measured in 400- $\mu$ l serum from mice that were in estrus as indicated by vaginal smearing and delivery of vaginal reproductive tract. ND, not determined.



**TABLE 1. Uterine weight (milligrams) as a function of age and genotype**

Age	Wild-type	Heterozygote	ArKO
10-12 weeks	70.6 $\pm$ 4.0 <sup>a,b,c</sup>	86.9 $\pm$ 8.8 <sup>a,c</sup>	53.7 $\pm$ 11.3 <sup>b</sup>
21-23 weeks	94.2 $\pm$ 7.8 <sup>c,d</sup>	127.8 $\pm$ 27.5 <sup>d</sup>	*
1 yr	123.3 $\pm$ 13.3 <sup>a,d</sup>	140.1 $\pm$ 51.4 <sup>a,d</sup>	41.3 $\pm$ 4.6 <sup>b</sup>

Mean  $\pm$  SEM (n = 5-22 organs/group). \* Uterine horns were not collected from ArKO mice at 21-23 weeks of age. Means with different letters denote statistical significance. Within a genotype across the age groups, ' and 'd' denote statistical significance; within an age group across the genotypes, 'a' and 'b' denote statistical significance ( $P < 0.02-0.001$  relative to the appropriate control).

**TABLE 2. Numbers of corpora lutea per ovary in wild-type, heterozygote, and ArKO mouse ovaries**

Age	Wild type	Heterozygote	ArKO
10-12 weeks	8.25 $\pm$ 0.5 (4)	5.70 $\pm$ 0.7 (3)	0 (4)
21-23 weeks	5.70 $\pm$ 0.7 (3)	3.70 $\pm$ 0.9 (3)	0 (3)
1 yr	5.70 $\pm$ 1.3 (3)	7.00 $\pm$ 1.2 (3)	0 (4)

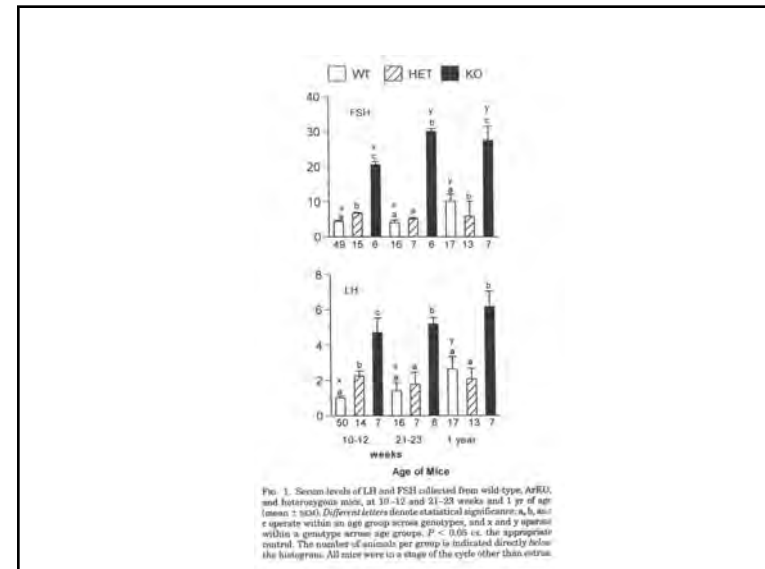
Values are the mean  $\pm$  SEM; the number of animals is in parentheses.

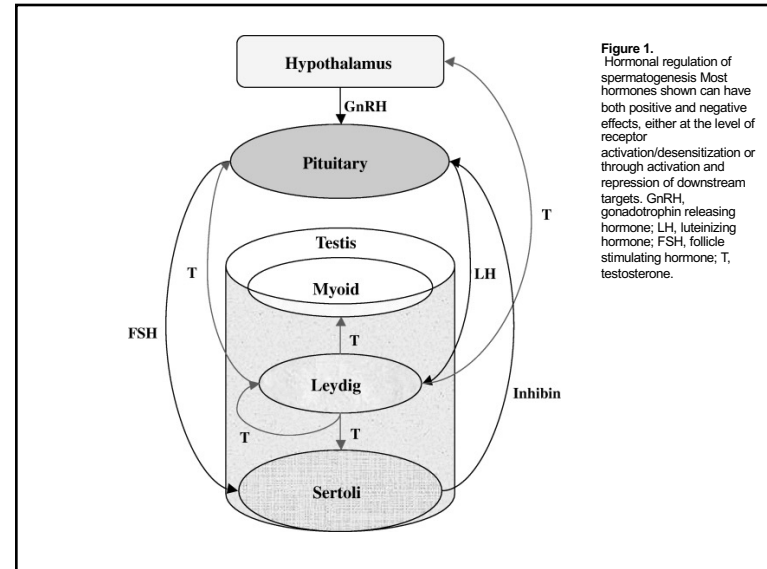
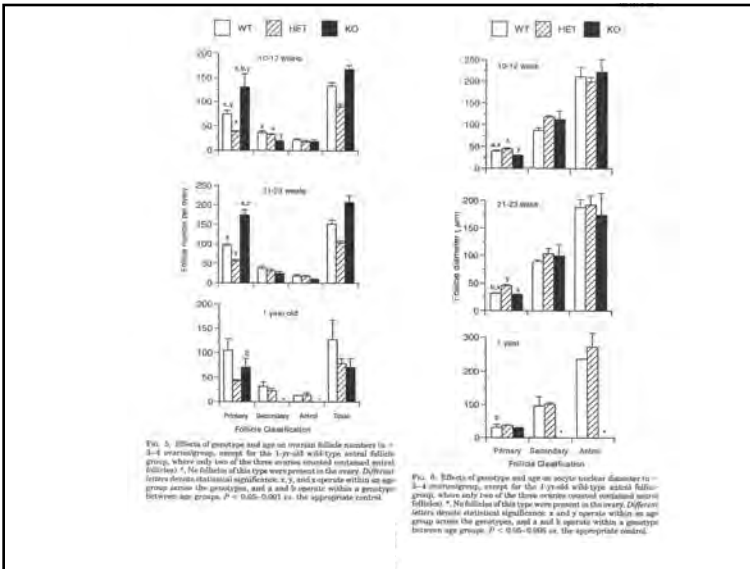
## An Age-Related Ovarian Phenotype in Mice with Targeted Disruption of the *Cyp 19* (Aromatase) Gene\*

KARA L. BRITT, ANN E. DRUMMOND, VICTORIA A. COX, MITZILEE DYSON, NIGEL G. WREFORD, MARGARET E. E. JONES, EVAN R. SIMPSON, AND JOCK K. FINDLAY

Prince Henry's Institute of Medical Research and Department of Anatomy, Monash University (N.G.W.), Clayton, Victoria 3168, Australia

**ABSTRACT**  
 With the development of a mouse model of estrogen insufficiency due to targeted disruption of the aromatase gene (the aromatase knockout (ArKO) mouse), a new opportunity exists to examine the role of estrogen in ovarian follicular development. Ovaries and serum were collected from wild-type, heterozygous, and ArKO mice at 10-12 and 21-23 weeks and 1 yr of age. The ovaries were assessed histologically and stereologically, with primary, secondary, and antral follicles and corpora lutea counted. The uteri were hypostrogenic, and serum levels of LH and FSH in ArKO females were elevated above those in heterozygote and wild-type animals at all ages studied. Although estrogen was not a prerequisite for resumption of follicle growth, there was a block of follicular development, and no corpora lutea were present in ArKO ovaries. Thus, the ArKO mouse was infertile as a consequence of disrupted folliculogenesis and a failure to ovulate. Hemorrhagic cystic follicles were present by 21-23 weeks of age. The ovarian phenotype degenerated with age, such that by 1 yr there were no secondary or antral follicles, and the primary follicles present were atretic. Extensive interstitial tissue remodeling occurred, exemplified by an influx of macrophages and collagen deposition, coincident with the loss of follicles. In conclusion, the ovarian environment in ArKO mice does not allow the characteristic development of follicles that culminates in ovulation and demonstrates an *in vivo* requirement of estrogen for normal ovarian function in the mouse. (*Endocrinology* 141: 2614-2623, 2000)





# Neuroendocrine

**Discovery of LHRH and development of LHRH analogs for prostate cancer treatment.**  
 Prostate. 2017 Jun;77(9):1036-1054.  
 Schally AV, Block NL, Rick FG.

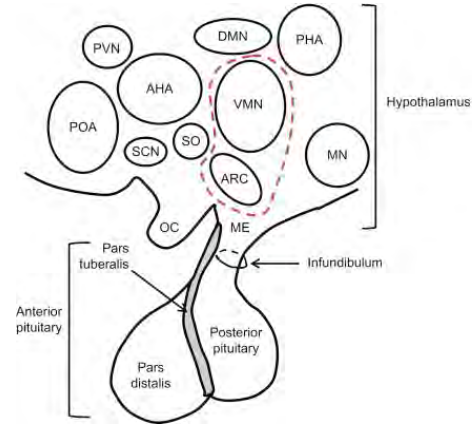
**Abstract**  
 The discovery, isolation, elucidation of structure, synthesis, and initial testing of the neuropeptide hypothalamic luteinizing hormone-releasing hormone (LHRH), which regulates reproduction, is briefly described. The design, synthesis, and experimental and clinical testing of agonistic analogs of LHRH is extensively reviewed focusing on the development of new methods for the treatment of prostate cancer. Subsequent development of antagonistic analogs of LHRH is then faithfully recounted with special emphasis on therapy of prostate cancer and BPH. The concepts of targeted therapy to peptide receptors on tumors are re-examined and the development of the cytotoxic analogs of LHRH and their status is reviewed. The endeavor to develop better therapies for prostate cancer, based on LHRH analogs, guided much of our work.

Glp - His - Trp - Ser - Tyr - D-Lys - Leu - Arg - Pro - Gly - NH<sub>2</sub>

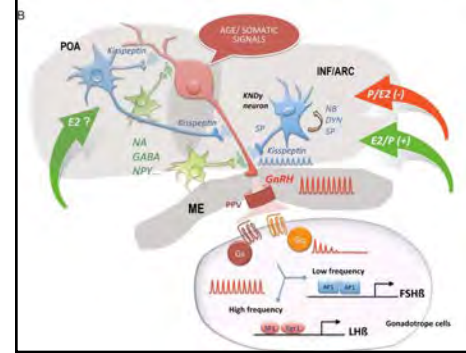
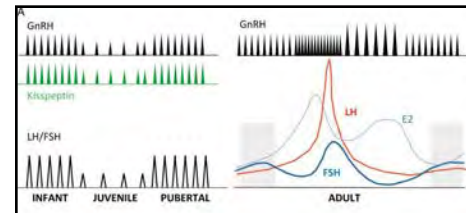
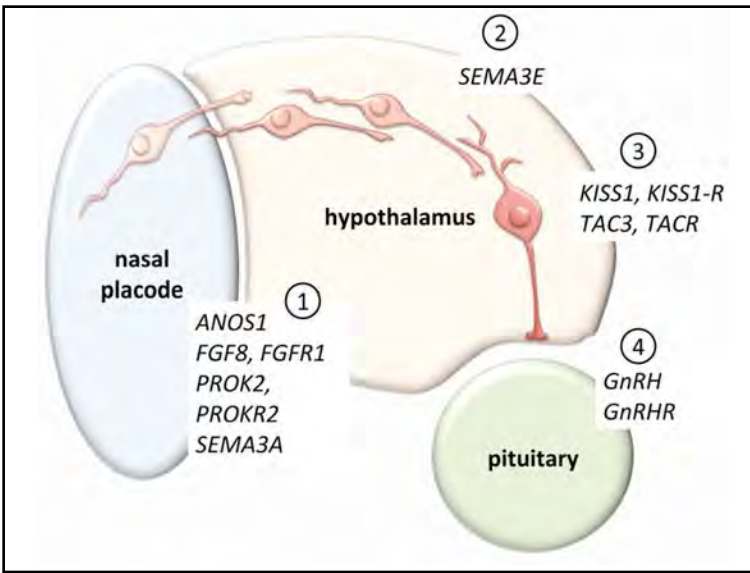
**TABLE 1** Structures of agonistic analogs of LHRH in clinical use

Generic name (brand name)	Chemical structure
leuprolide (Lupron, Eligard)	pGlu <sup>1</sup> -His <sup>2</sup> -Trp <sup>3</sup> -Ser <sup>4</sup> -Tyr <sup>5</sup> -DLeu <sup>6</sup> -Leu <sup>7</sup> -Arg <sup>8</sup> -Pro <sup>9</sup> -NH <sub>2</sub>
triptorelin (Decapeptyl, Gonapeptyl, Trelstar LA)	pGlu <sup>1</sup> -His <sup>2</sup> -Trp <sup>3</sup> -Ser <sup>4</sup> -Tyr <sup>5</sup> -DTrp <sup>6</sup> -Leu <sup>7</sup> -Arg <sup>8</sup> -Pro <sup>9</sup> -Gly <sup>10</sup> -NH <sub>2</sub>
buserelin (Suprefact, Suprecor)	pGlu <sup>1</sup> -His <sup>2</sup> -Trp <sup>3</sup> -Ser <sup>4</sup> -Tyr <sup>5</sup> -DSer(tBu) <sup>6</sup> -Leu <sup>7</sup> -Arg <sup>8</sup> -Pro <sup>9</sup> -NH <sub>2</sub>
goserelin (Zoladex)	pGlu <sup>1</sup> -His <sup>2</sup> -Trp <sup>3</sup> -Ser <sup>4</sup> -Tyr <sup>5</sup> -DSer(tBu) <sup>6</sup> -Leu <sup>7</sup> -Arg <sup>8</sup> -Pro <sup>9</sup> -AzGly <sup>10</sup> -NH <sub>2</sub>
nafarelin (Synarel)	pGlu <sup>1</sup> -His <sup>2</sup> -Trp <sup>3</sup> -Ser <sup>4</sup> -Tyr <sup>5</sup> -DNaI <sup>6</sup> -Leu <sup>7</sup> -Arg <sup>8</sup> -Pro <sup>9</sup> -NH <sub>2</sub>
histrelin (Supprelin LA, Vantas)	pGlu <sup>1</sup> -His <sup>2</sup> -Trp <sup>3</sup> -Ser <sup>4</sup> -Tyr <sup>5</sup> -DHis(Bzl) <sup>6</sup> -Leu <sup>7</sup> -Arg <sup>8</sup> -Pro <sup>9</sup> -Gly <sup>10</sup> -NH <sub>2</sub>

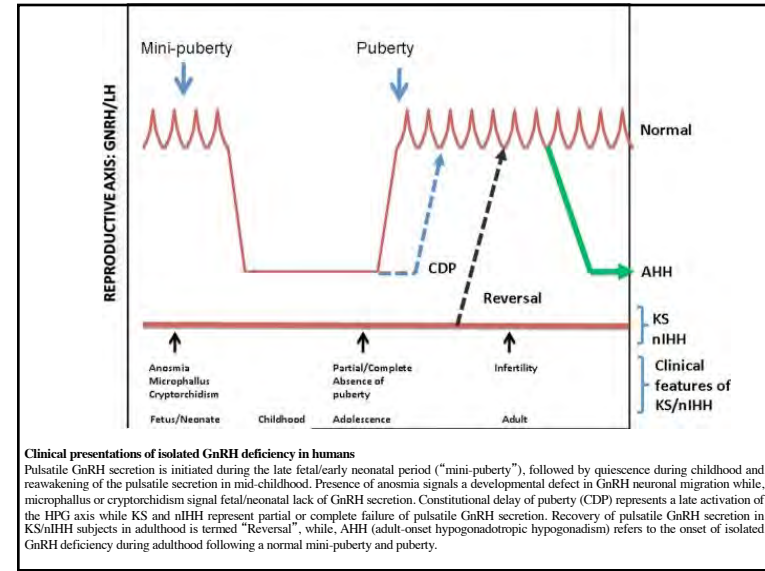
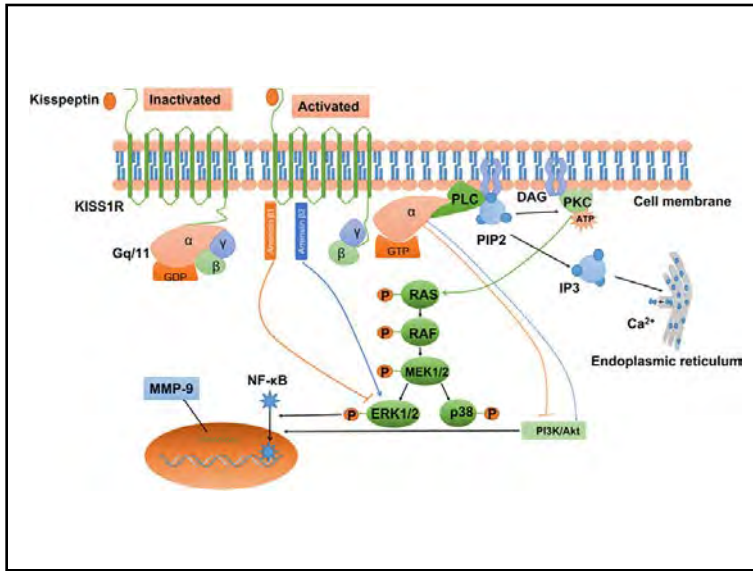
pGlu, pyroglutamic acid; His, histidine; Trp, tryptophan; Ser, serine; Tyr, tyrosine; DLeu, D-leucyl; NHEt, N-ethylamide; Gly, glycine; Leu, leucine; Arg, arginine; Pro, proline; DSer(tBu), D-seryl tertbutyl; AzGly, Azgly stands for glycine in which the α-CH has been replaced by a nitrogen atom; DNaI, D-naphthyl-alanyl; DTrp, D-tryptophyl; DHis(Bzl)<sub>n</sub>, N-benzyl-D-histidine.



Hypothalamic and pituitary anatomy. Sagittal view of mammalian hypothalamic and pituitary anatomy. The mediobasal hypothalamus is encompassed by red dashed lines. The pars tuberalis, part of the anterior pituitary, is shaded in gray. AHA, anterior hypothalamic area; ARC, arcuate nucleus; DMN, dorsomedial nucleus; ME, median eminence; MN, mammillary nuclei; OC, optic chiasm; POA, preoptic area; PHA, posterior hypothalamic area; PVN, paraventricular nucleus; SCN, supraoptic nucleus; SO, supraoptic nucleus; VMN, ventromedial nucleus.

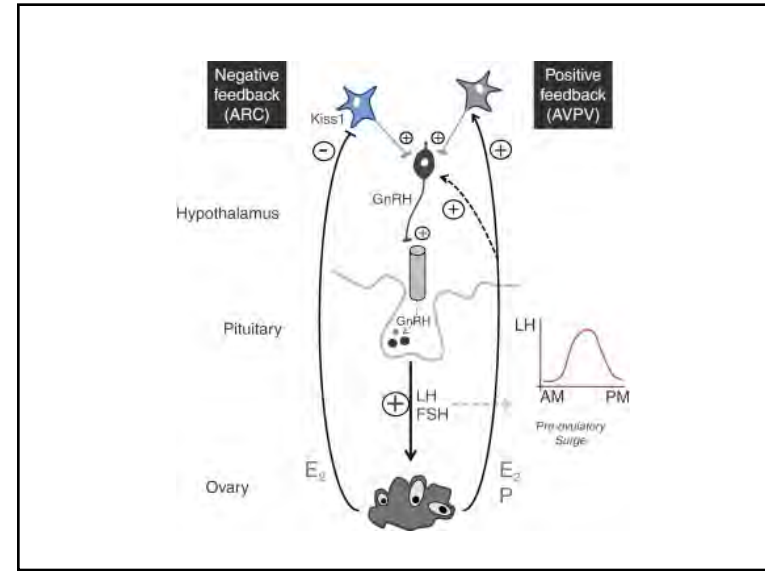
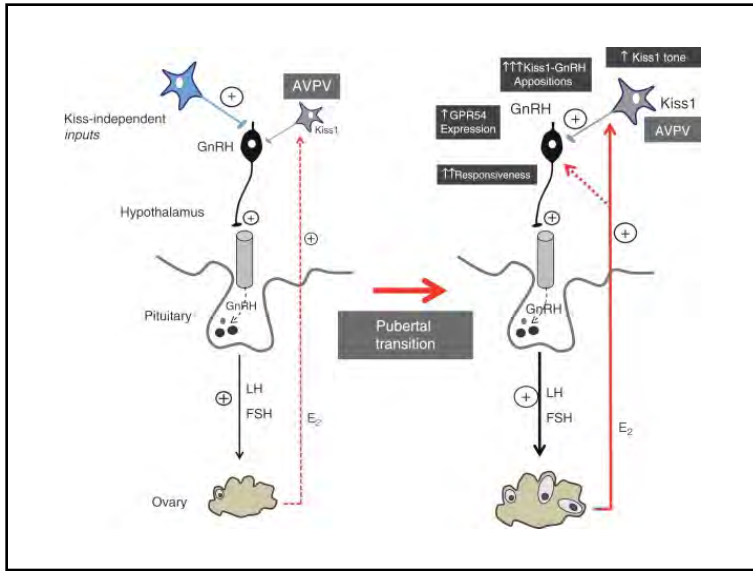


(A) Representation of the variations in pulsatile secretion of GnRH during the human female lifespan. (B) Summary of the physiological mechanisms possibly involved in the control of GnRH secretion and its action on gonadotrope cells. (POA: preoptic area; INF: infundibular region; ARC: arcuate nucleus; ME: median eminence; NPY: neuropeptide Y; GABA: gamma aminobutyric acids; NA: noradrenaline; NB: neurokinin B; DYN: dynorphin; SP: substance P; E2: estradiol; P: progesterone; SF1: steroidogenic factor 1 transcription factor; Egr1: early growth response 1 transcription factor; AP1: activating protein 1 transcription factor; Gs: Gs alpha subunit; Gq: Gq/11 subunit).



**Clinical presentations of isolated GnRH deficiency in humans**

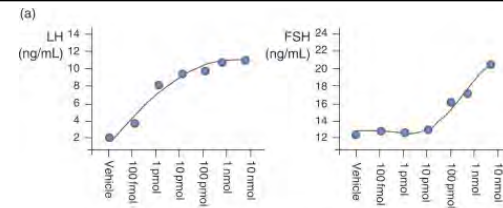
Pulsatile GnRH secretion is initiated during the late fetal/early neonatal period ("mini-puberty"), followed by quiescence during childhood and reawakening of the pulsatile secretion in mid-childhood. Presence of anosmia signals a developmental defect in GnRH neuronal migration while, microphallus or cryptorchidism signal fetal/neonatal lack of GnRH secretion. Constitutional delay of puberty (CDP) represents a late activation of the HPG axis while KS and nIHH represent partial or complete failure of pulsatile GnRH secretion. Recovery of pulsatile GnRH secretion in KS/nIHH subjects in adulthood is termed "Reversal", while, AHH (adult-onset hypogonadotropic hypogonadism) refers to the onset of isolated GnRH deficiency during adulthood following a normal mini-puberty and puberty.



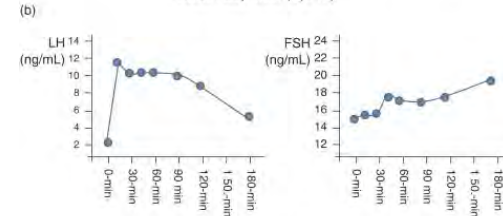
**Physiological roles of the kisspeptin/GPR54 system in the neuroendocrine control of reproduction.**  
 Pineda R, Aguilar E, Pinilla L, Tena-Sempere M.  
 Prog Brain Res. 2010;181:55-77.



Structure of kisspeptins – the peptide products of the KISS1 gene. Different kisspeptins are generated by proteolytic cleavage from a common precursor of 145 amino acids, prepro-kisspeptin, which contains a 19-amino-acid signal peptide and a central 54-amino-acid region, kisspeptin-54 (Kp-54; formerly termed metastin). Lower-molecular-weight forms of kisspeptins include Kp-14, Kp-13 and Kp-10; the latter corresponds to the common C-terminal 10-amino-acid stretch that contains the RFamide motif and is sufficient to activate GPR54. Adapted from Roa et al. (2008a), with substantial modifications.



Dose-Response (Kp-10)

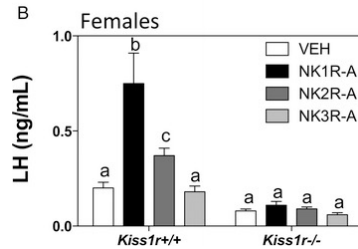
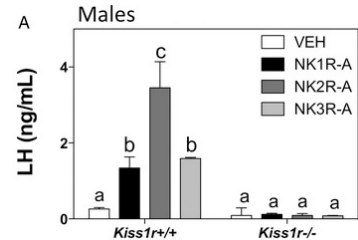


Time-Course (Kp-10; 1 nmol)

Prototypical gonadotropin responses to kisspeptin stimulation in rats. Schematic illustrations are presented of the patterns of LH and FSH responses to intra-cerebral administration of Kp-10. Both dose-dependent (panel A) and time-dependent (panel B) gonadotropic responses are shown. Hormonal values are adapted from original data from Navarro et al., 2005a and Navarro et al., 2005b and our unpublished observations.

**The integrated hypothalamic tachykinin-kisspeptin system as a central coordinator for reproduction.**

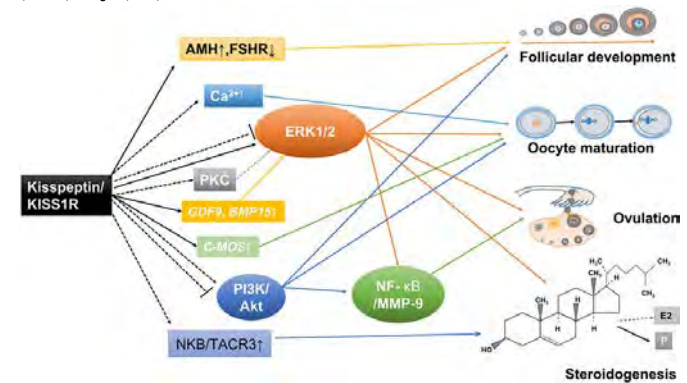
Navarro VM, Bosch MA, León S, et al.  
 Endocrinology. 2015 Feb;156(2):627-37.



Serum LH levels in WT (*Kiss1<sup>r+/+</sup>*) and *Kiss1<sup>r-/-</sup>* adult (A) male and (B) diestrous female mice 20 minutes after central injection of 600 pmol GR73632 (NK1R-A), GR64349 (NK2R-A), or senkide (NK3R-A).

Two-way ANOVA + Bonferroni's post hoc test. Different letters indicate significant differences between groups ( $P < .05$ ).

**Kisspeptin/Kisspeptin Receptor System in the Ovary.**  
 Front Endocrinol (Lausanne). 2018 Jan 4;8:365  
 Hu KL, Zhao H, Chang HM, Yu Y, Qiao J.



### Neuroendocrine regulation of gonadotropins in the male and the female

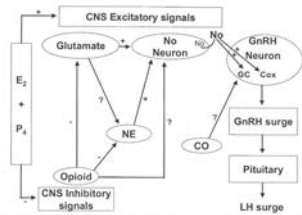


Fig. 5. A proposed model for central role of NO in the preovulatory LH surge (Brann et al., 1997, modified). GC = guanylate cyclase, Cox = cyclooxygenase, NE = norepinephrine,  $E_2$  = estradiol-17 $\beta$ ,  $P_4$  = progesterone.

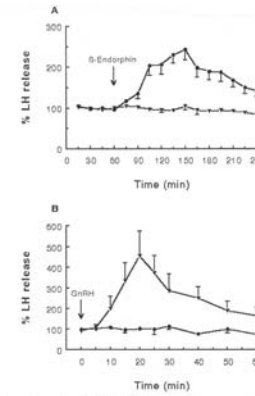
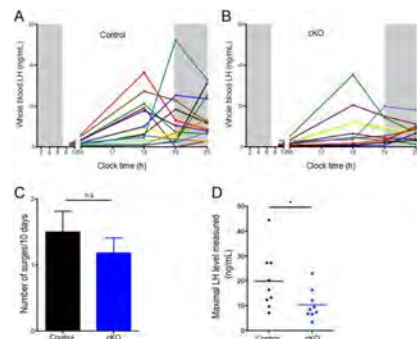


Fig. 4. In vitro LH release from perfused pituitaries (female pigs) in response to  $\beta$ -endorphin (●, panel A). Pituitaries were challenged with GnRH 240 min after  $\beta$ -endorphin (panel B). (▼) Saline + GnRH, (●) saline and  $\beta$ -endorphin.

### Impaired LH surge amplitude in gonadotropin-specific progesterone receptor knockout mice.

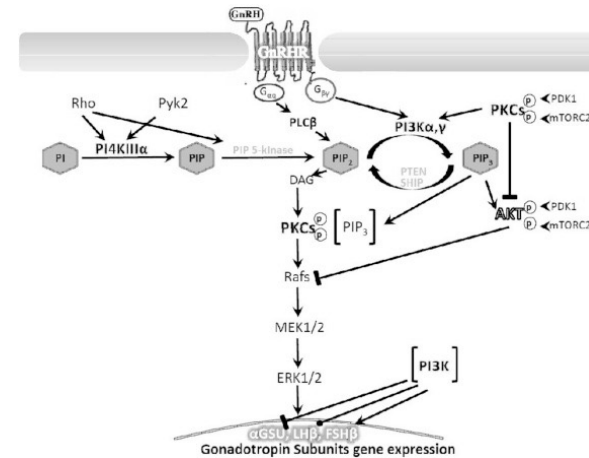
Toufaily C, Schang G, Zhou X, Wartenberg P, Boehm U, Lydon JP, Roelfsema F, Bernard DJ. J Endocrinol. 2020 Jan;244(1):111-122.

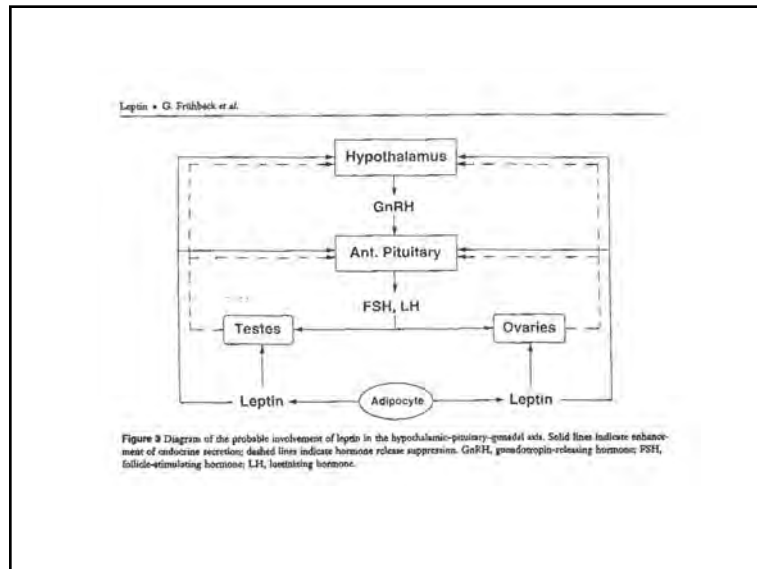
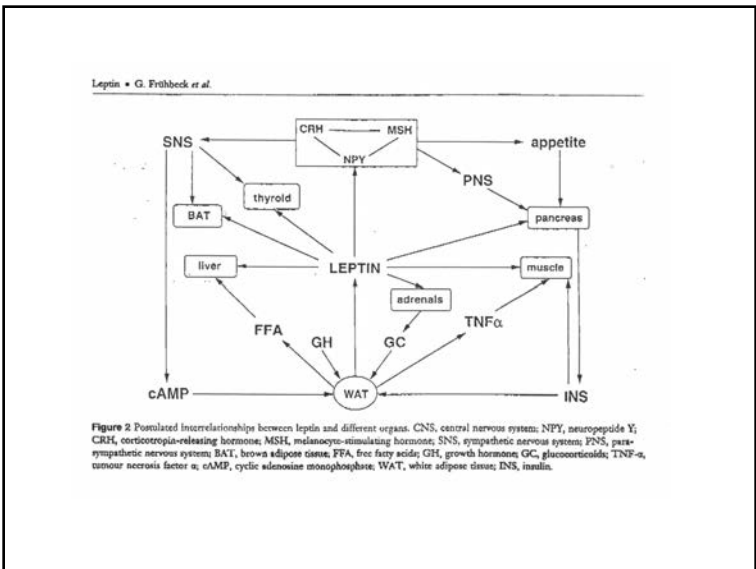
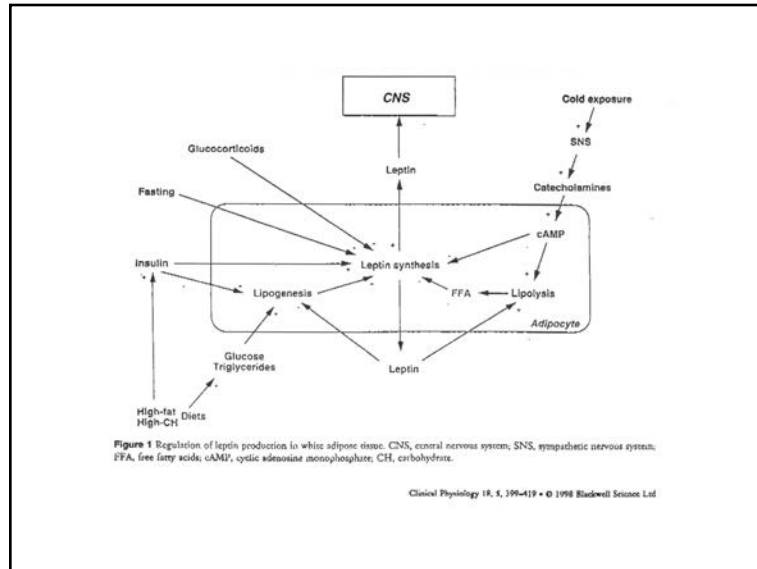
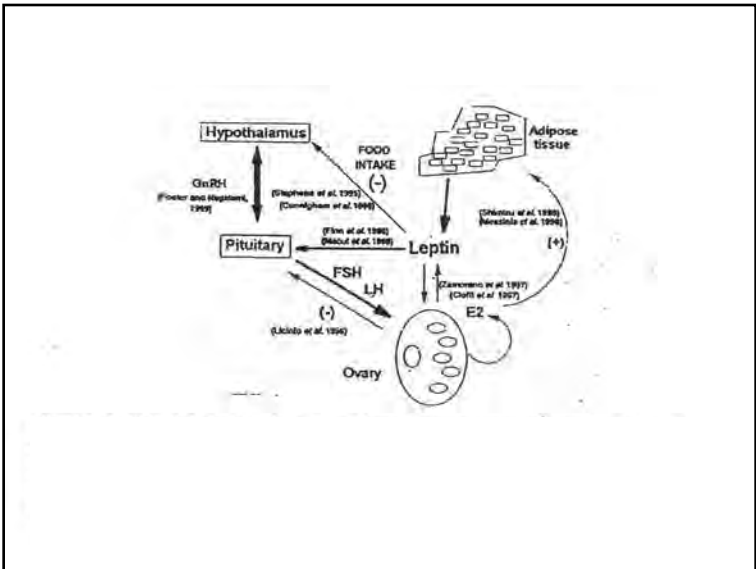


The LH surge is blunted in *Pgr*-knockout females. Blood samples were collected four times daily for 10 consecutive days. Representative profiles of the LH secretion obtained on proestrus from control (A) and cKO (B) female mice. Different colors indicate different mice. Gray areas represent the dark phase of the light/dark cycle. (C) Number of surges observed in each mouse during the 10 days of the experiment. (D) Maximal LH levels measured on proestrus from control ( $n=9$ ) and cKO ( $n=9$ ) females. Student *t*-tests were performed for statistical analysis. \* $P < 0.05$ . n.s., non-significant. Note: maximal values in panel D are lower than in panels A and B because averages were used in panel D in mice that surged more than once (see Methods section).

### Role of PI4K and PI3K-AKT in ERK1/2 activation by GnRH in the pituitary gonadotropes.

Bar-Lev TH, Harris D, Tomić M, et al. Mol Cell Endocrinol. 2015 Nov 5;415:12-23.





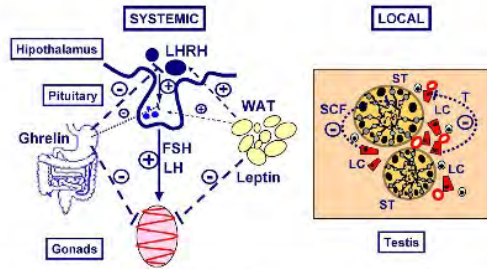
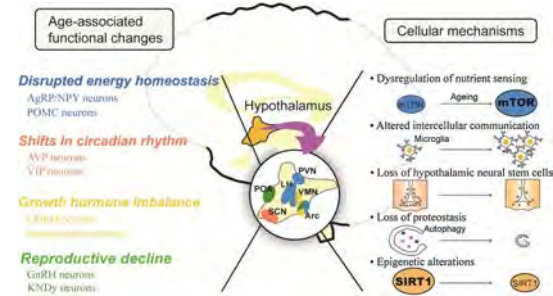


Fig. 1. Tentative model for the 'reproductive' actions of ghrelin, involving two distinct, but probably partially overlapping systems. In the left panel, the potential SYSTEMIC actions of gut-derived circulating ghrelin at different levels of the hypothalamic–pituitary–gonadal axis are depicted. Through these systemic effects, ghrelin likely cooperates with other relevant peripheral signals with key roles in energy homeostasis (e.g. the adipocyte-derived hormone leptin) in the regulation of reproductive function. In addition, LOCAL expression of ghrelin is detected in the gonads. In the right panel, a schematic presentation of the sites of expression and direct biological actions of ghrelin within the testis are presented. In human and rat testis, ghrelin is produced with high selectivity in mature Leydig cells (LC), whereas in paraventricular receptor, the GHS-R1a, presents a wider pattern of cellular expression, including Sertoli cells within the seminiferous tubules (ST), and Leydig cells. Direct actions of ghrelin in the testis include inhibition of testosterone (T) secretion (steroidogenesis), and probably, regulation of tubular functions, such as expression of stem cell factor (SCF) gene.

# Endocrine Disruptors

## Role of hypothalamus in aging and its underlying cellular mechanisms.

Kim K, Choe HK. Mech Ageing Dev. 2019 Jan;177:74-79.



The hypothalamus as a regulator of systemic aging. We propose a working model that the hypothalamus controls several aspects of systemic aging. Here, an age-dependent decline in physiological functions, including disruption of energy homeostasis, shifts in the circadian rhythm, imbalance in GH levels, and decline in reproduction, is mediated through age-associated changes in the master regulatory neurons, such as the AgRP/NPY, POMC, AVP, VIP, GHRH, SST, GnRH, and KNDy neurons. Notably, the hypothalamus is also a region where a majority of molecular pathways implicated in aging, such as nutrient sensing, inflammation, neural stem cell, proteostasis, and epigenetic regulation, are altered with aging.

## OVERVIEW OF ENDOCRINE DISRUPTOR RESEARCH ACTIVITY IN THE UNITED STATES

R.J. Kavlock  
Reproductive Toxicology Division (MD-71)  
National Health and Environmental Effects Research Laboratory  
US Environmental Protection Agency  
Research Triangle Park, NC 27711, USA

### ABSTRACT

The issue of whether environmental contaminants are inducing adverse health effects in humans and wildlife via interaction with endocrine systems has gained increasing interest during the 1990s. Endocrine disruption is one of the highest priority research topics for the US EPA, and a detailed research strategy has been developed to guide the placement of resources over the next several years. To address the deficiency of testing guidelines in detecting and characterizing damage mediated by interaction with the endocrine system, EPA has issued new multi-generation testing guidelines. The new endpoints for monitoring pubertal development, semen quality, and estrous cyclicity will better enable determination of the affected sex, target organ, and life stage following exposure throughout the life cycle. Another major area of effort within EPA is the development of an endocrine disruptor screening program in response to passage of the Food Quality Protection Act of 1996. The current status of these efforts is described. On the federal level, endocrine disruption is one of the five priority research areas for the Committee on the Environment and Natural Resources (CENR) within the Executive Office of President. The CENR has developed a framework to assess research needs for endocrine disruptors, inventoried existing efforts of the federal government (nearly 400 projects were identified as active in FY96), and prioritized additional research needs based upon the needs and gaps in current efforts. It is clear that a great deal of research is underway to clarify the validity of the endocrine disruptor hypothesis and to determine the breadth of chemicals that pose a risk to the endocrine system. The degree of forward research planning and coordination across many organizations should ensure that sufficient data will be available within the next few years to allow a rigorous weight of evidence evaluation that is needed to bring together diverse types of information to make informed decisions regarding risks to humans and wildlife. © 1999 Published by Elsevier Science Ltd. All rights reserved.

### INTRODUCTION

The issue of whether humans and domestic and wildlife species have suffered adverse health consequences resulting from exposure to environmental chemicals that interact with the endocrine system has gained increasing prominence throughout the 1990s. However, considerable uncertainty exists regarding the relationship between adverse health outcomes and exposure to environmental contaminants. Collectively, chemicals with the potential to interfere with the function of endocrine systems are called endocrine disrupting.



**Table 1.** Summary of relative sensitivity of endpoints in traditional multi-generation study (fertility, fecundity, and somatic growth) compared with alternate measures of reproduction function or capacity for chemicals that work through the estrogen, androgen, and Ah receptors. The lowest dose level at which a statistically significant effect was observed is noted by symbol (the lower the dose within a chemical, the more the number of "+"); see footnotes for chemical, exposure duration, and dose levels.

	WEAK ESTROGEN <sup>1</sup>		ANTI-ANDROGEN <sup>2</sup>		AH AGONIST <sup>3</sup>	
	Male	Female	Male	Female	Male	Female
Fertility		+		+		+(TTP)
Fecundity		++		+		
Growth of F1	++	++			+	
Sex differentiation			+++ (AGD)	-(AGD)	-(AGD)	-(AGD)
Puberty	+(PS)	+++ (VO)			++ (PS)	+(VO)
Physiology					+++ (EC)	+++ (EC)
Gamete number	++ (CSC)	++ (EC)			+++ (ESC)	+++ (ESC)
Accessory sex gland weights	++		+++		++	
Conad weight		+				
Pituitary hormones	+++ (PL)					
Sexoid hormones	-(hT)					
Malformations			-(T)	+(HS)		++ (VT)

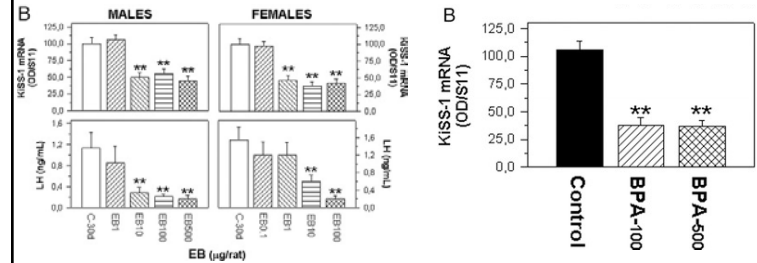
<sup>1</sup> Mixture of 100 chemicals, GD15-PD21, dose levels: -, 200 mg/kg/d; +, 100 mg/kg/d; ++, 50 mg/kg/d; +++, 25 mg/kg/d [7, 14, 15]. Fertility and fecundity data are for the parental generation.

<sup>2</sup> Vinclozolin, GD14-PD0; dose levels: -, 100-200 mg/kg/d; +, 50 mg/kg/d; ++, 12.5-25 mg/kg/d; +++, 3-6 mg/kg/d [8, 16].

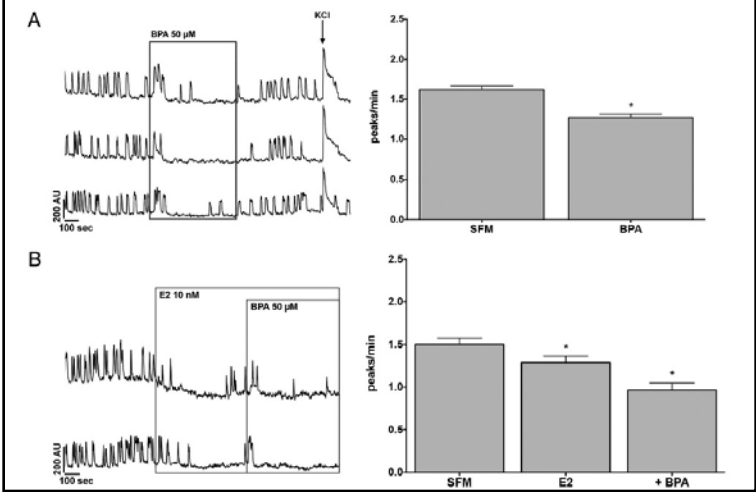
<sup>3</sup> "Dioxin", GD 15; dose levels: -, 1 g/kg; +, 0.5 g/kg; ++, 0.2 g/kg; +++, 0.05 g/kg [9, 17-19].

Abbreviations: AGD, anogenital distance; CSC, caudal sperm count; EC, estrous cyclicity; EGO, age at eye opening; ESC, ejaculated sperm count; GD, gestation day; PL, prolactin; PS, age at preputial gland separation; VO, age at vaginal opening; VT, vaginal thread; T, serum testosterone; TTP, time-to-pregnancy.

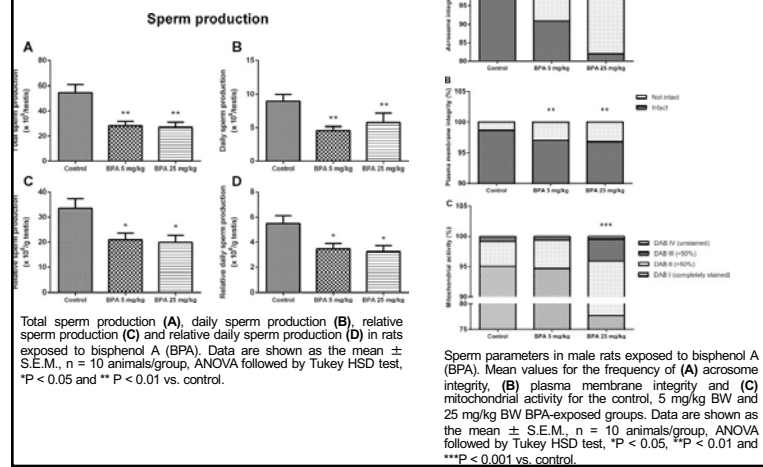
**Persistent impairment of hypothalamic KiSS-1 system after exposures to estrogenic compounds at critical periods of brain sex differentiation.**  
Navarro VM, et al.  
Endocrinology. 2009 May;150(5):2359-67.



**BPA directly decreases GnRH neuronal activity via non-canonical pathway.**  
Klenke U, Constantin S, Wray S.  
Endocrinology. 2016 Mar 2;en20151924. [Epub ahead of print]

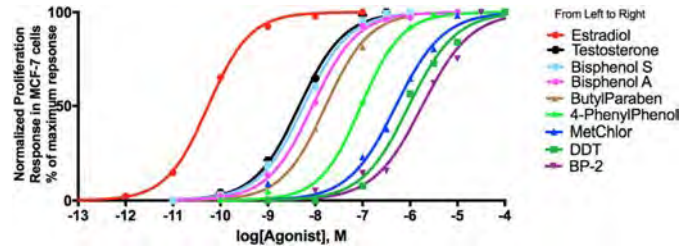


**Adult exposure to bisphenol A (BPA) in Wistar rats reduces sperm quality with disruption of the hypothalamic-pituitary-testicular axis.**  
Wisniewski P, Romano RM, Kizys MM, et al.  
Toxicology. 2015 Mar 2;329:1-9.

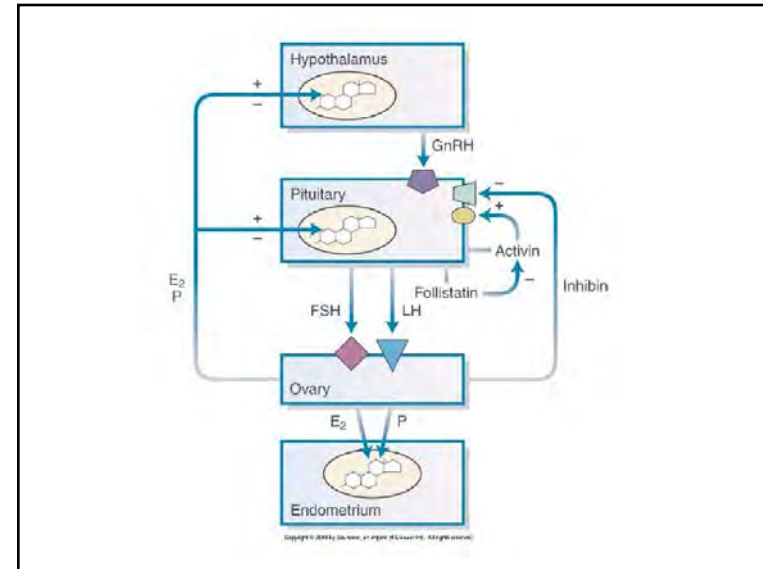


Low-dose environmental endocrine disruptors, increase aromatase activity, estradiol biosynthesis and cell proliferation in human breast cells.

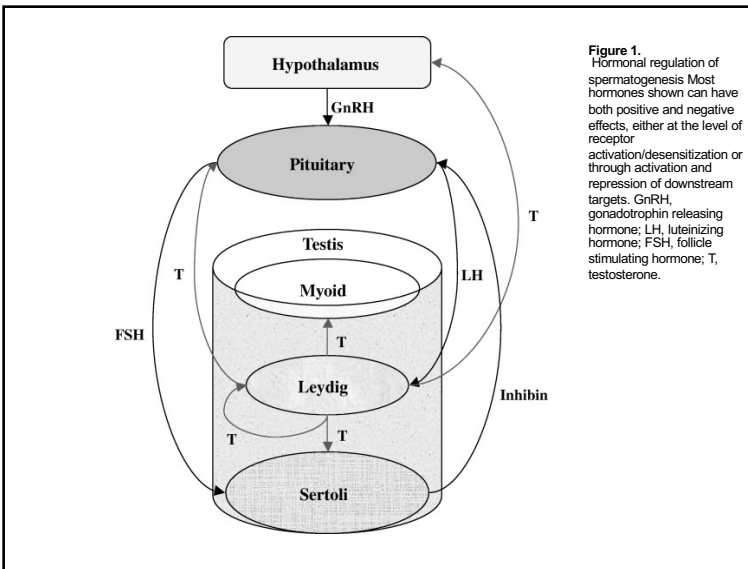
Williams GP, Darbre PD.  
Mol Cell Endocrinol. 2019 Apr 15;486:55-64.



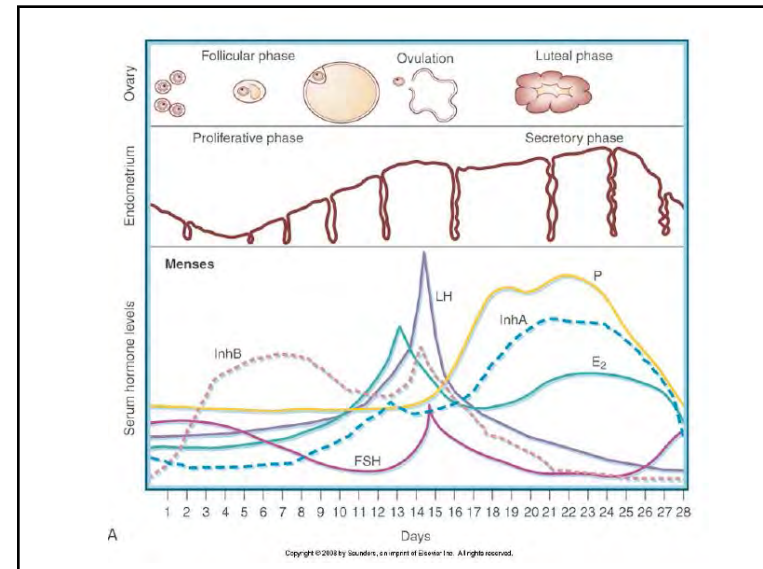
Proliferative growth-response curves of MCF-7 cells treated with serial dilutions of the test compounds, plotted as concentration-response sigmoidal curves with log concentration of molarity vs. proliferative cell growth normalized to the percentage of maximal response. The cells were grown in phenol red-free DMEM, 5% DCFCS, with a nil addition/vehicle (negative control) in the presence of the serial test concentrations, for 7 day at 37° in humidified air containing 10% carbon dioxide. Technical triplicate cell counts were averaged and expressed as a percentage of the maximal response relative to the untreated control, with normalization and curve smoothing using GraphPad Prism 8.



Copyright © 2009 by Saunders, an imprint of Elsevier Inc. All rights reserved.



**Figure 1.** Hormonal regulation of spermatogenesis. Most hormones shown can have both positive and negative effects, either at the level of receptor activation/desensitization or through activation and repression of downstream targets. GnRH, gonadotrophin releasing hormone; LH, luteinizing hormone; FSH, follicle stimulating hormone; T, testosterone.



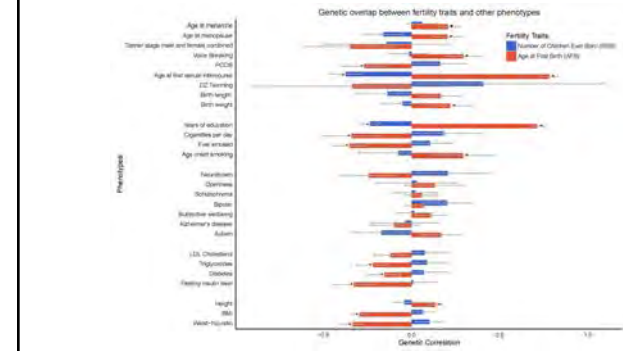
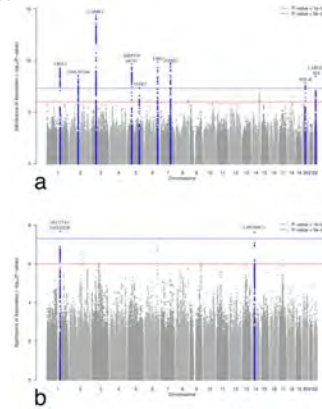
Copyright © 2009 by Saunders, an imprint of Elsevier Inc. All rights reserved.

**Genome-wide analysis identifies 12 loci influencing human reproductive behavior.**  
 Nat Genet. 2016 Dec;48(12):1462-1472.  
 Barban N, Jansen R, de Vlaming R, et al.

**Abstract**

The genetic architecture of human reproductive behavior—age at first birth (AFB) and number of children ever born (NEB)—has a strong relationship with fitness, human development, infertility and risk of neuropsychiatric disorders. However, very few genetic loci have been identified, and the underlying mechanisms of AFB and NEB are poorly understood. We report a large genome-wide association study of both sexes including 251,151 individuals for AFB and 343,072 individuals for NEB. We identified 12 independent loci that are significantly associated with AFB and/or NEB in a SNP-based genome-wide association study and 4 additional loci associated in a gene-based effort. These loci harbor genes that are likely to have a role, either directly or by affecting non-local gene expression, in human reproduction and infertility, thereby increasing understanding of these complex traits.

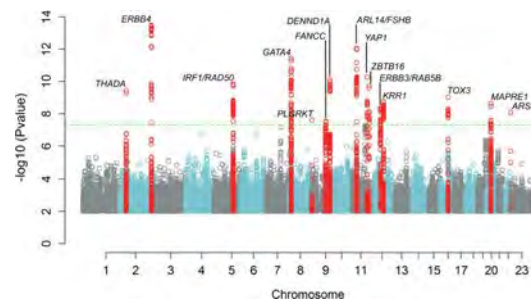
Manhattan plots of SNPs for AFB (age at first birth) and NEB (number of children ever born) in single genome control meta-analysis SNPs are plotted on the x-axis according to their position on each chromosome against association with AFB (panel a) and NEB (panel b). The solid blue line indicates the threshold for genome-wide significance ( $P < 5 \times 10^{-8}$ ) and the red line, the threshold for suggestive hits ( $P < 5 \times 10^{-9}$ ). Blue points indicate SNPs in a  $\pm 100$  KB region around genome-wide significant hits. Gene labels are annotated as the nearby genes to the significant SNPs.



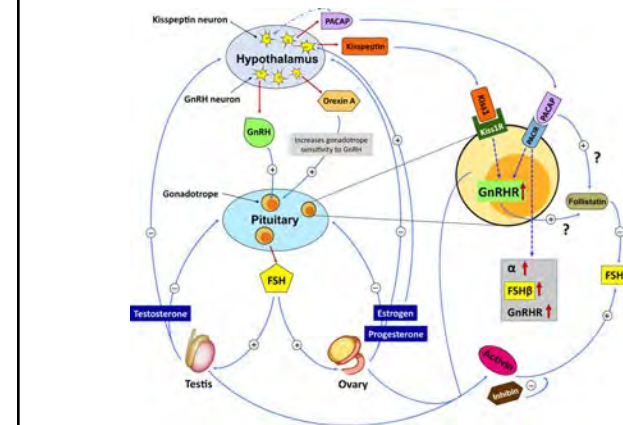
**Genetic overlap between AFB and NEB and other related traits** Results from Linkage-Disequilibrium (LD) Score regressions: estimates of genetic correlation with developmental, reproductive, behavioral, neuropsychiatric and anthropometric phenotypes for which GWAS summary statistics were available in the public domain. The length of the bars indicates the estimates of genetic correlation. Grey error bars indicate 95% confidence intervals. The mark "\*" indicates that the estimate of genetic correlation is statistically significant after controlling for multiple testing ( $P < 0.05/27 = 1.85 \times 10^{-3}$ ).

**Large-scale genome-wide meta-analysis of polycystic ovary syndrome suggests shared genetic architecture for different diagnosis criteria.**

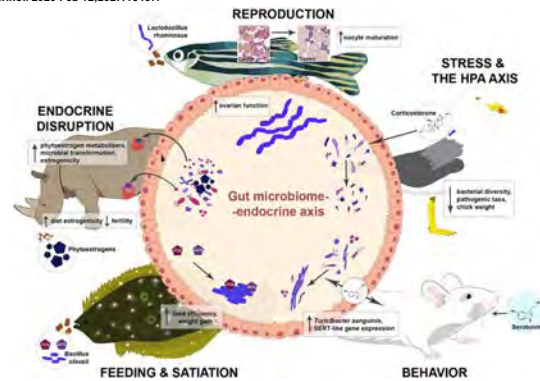
Day F, Karaderi T, Jones MR, Meun C, et al.  
 PLoS Genet. 2018 Dec 19;14(12):e1007813.



**Manhattan plot showing results of meta-analysis for PCOS status, adjusting for age.** The inverse log10 of the p value ( $-\log_{10}(p)$ ) is plotted on the Y axis. The green dashed line designates the minimum p value for genome-wide significance ( $< 5.0 \times 10^{-8}$ ). Genome wide significant loci are denoted with a label showing the nearest gene to the index SNP at each locus. SNPs with p values  $\leq 1.0 \times 10^{-2}$  are not depicted.



Regulation of endocrine systems by the microbiome: Perspectives from comparative animal models.  
 Williams CL, Garcia-Reyero N, Martyniuk CJ, Tubbs CW, Bisesi JH Jr.  
 Gen Comp Endocrinol. 2020 Feb 12;292:113437.



### "Systems Biology of Reproduction"

Spring 2024 (Even Years) – Course Syllabus  
 Biol 475/575 Undergraduate/Graduate (3 Credit)  
 SLN: (475) – 06763, (575) – 06764

Time - Tuesday and Thursday 10:35 am-11:50 am

Course Lectures in person and recorded on Canvas/Panopto and Discussion Sessions live in person and on WSU Zoom for all campuses (Hybrid Course)

Room – CUE 418

Course Director – Michael Skinner, Abelson Hall 507, 335-1524, [skinner@wsu.edu](mailto:skinner@wsu.edu)

Co-Instructor – Eric Nilsson, Abelson Hall 507, 225-1835, [nilsson@wsu.edu](mailto:nilsson@wsu.edu)

#### Learning Objective -

Current literature based course on the Systems Biology of Reproduction. Learning Systems approaches to the biology of reproduction from a molecular to physiological level of understanding.

#### Schedule/Lecture Outline -

January	9 & 11	Week 1	Systems Biology Introduction
	16 & 18	Week 2	Molecular/ Cellular/ Reproduction Systems
	23 & 25	Week 3	Sex Determination Systems
Jan /Feb	30 & 1	Week 4	Male Reproductive Tract Development & Function
February	6 & 8	Week 5	Female Reproductive Tract Development & Function
	13 & 15	Week 6	Gonadal Developmental Systems Biology
	20 & 22	Week 7	Testis Systems Biology
	27 & 29	Week 8	Ovary Systems Biology
March	5 & 7	Week 9	Epigenetics and Transgenerational Gonadal Disease
	11 – 15	Week 10	Spring Break
	19 & 21	Week 11	Gametogenesis/ Stem Cells/ Cloning
	26 & 28	Week 12	Hypothalamus-Pituitary Development & Function
April	2 & 4	Week 13	Reproductive Endocrinology Systems
	9 & 11	Week 14	Fertilization & Implantation Systems
	16 & 18	Week 15	Fetal Development & Birth Systems
	23 & 25	Week 16	Assisted Reproduction/Contraception
Apr/May	30 & 2	Week 17	Exam or Grant Review